

PENNWEST
reserve

2023

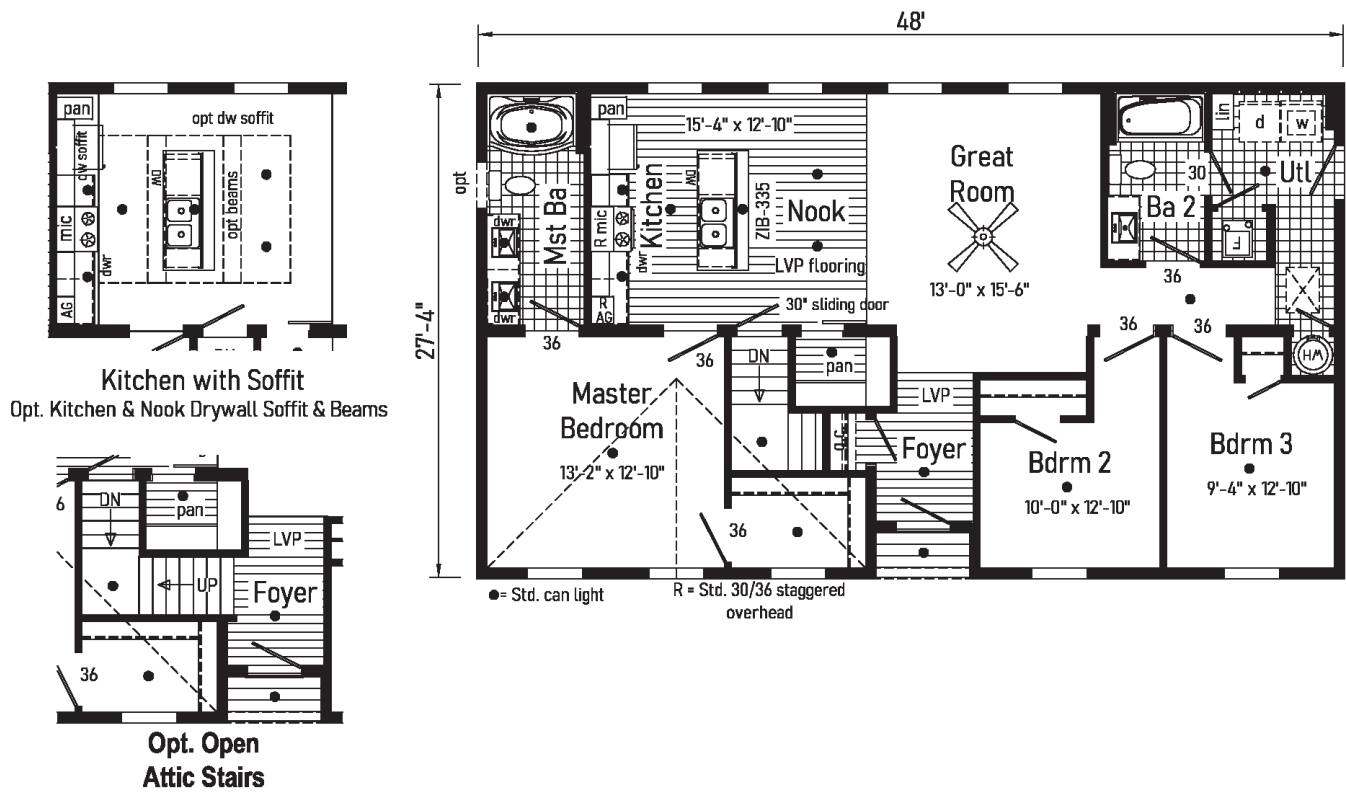
Belle Âme



PENNWEST
H O M E S

01 Belle Àme

2P2701R
 28x48 Approx. 1299 sq ft

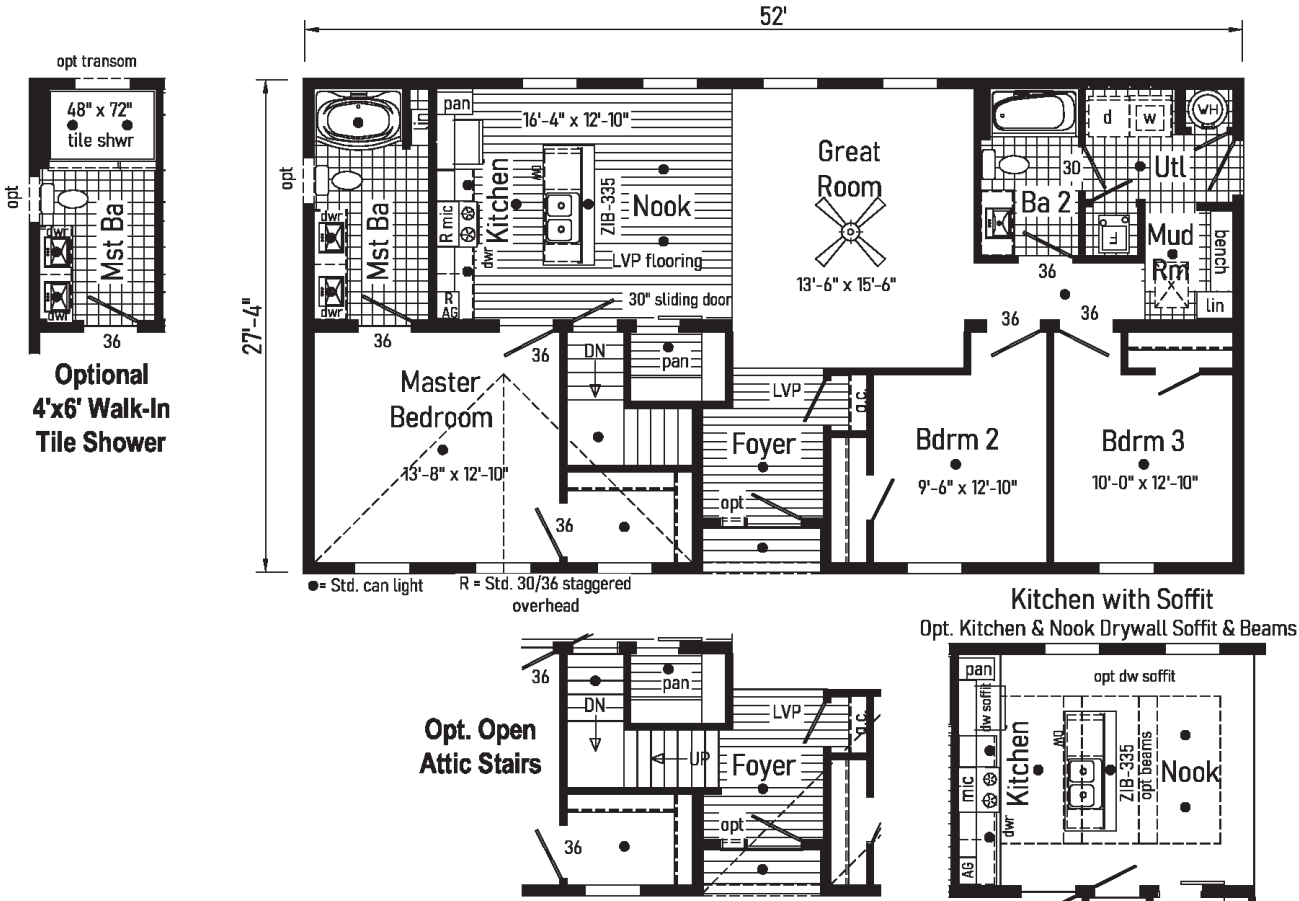




02

Belle Àme

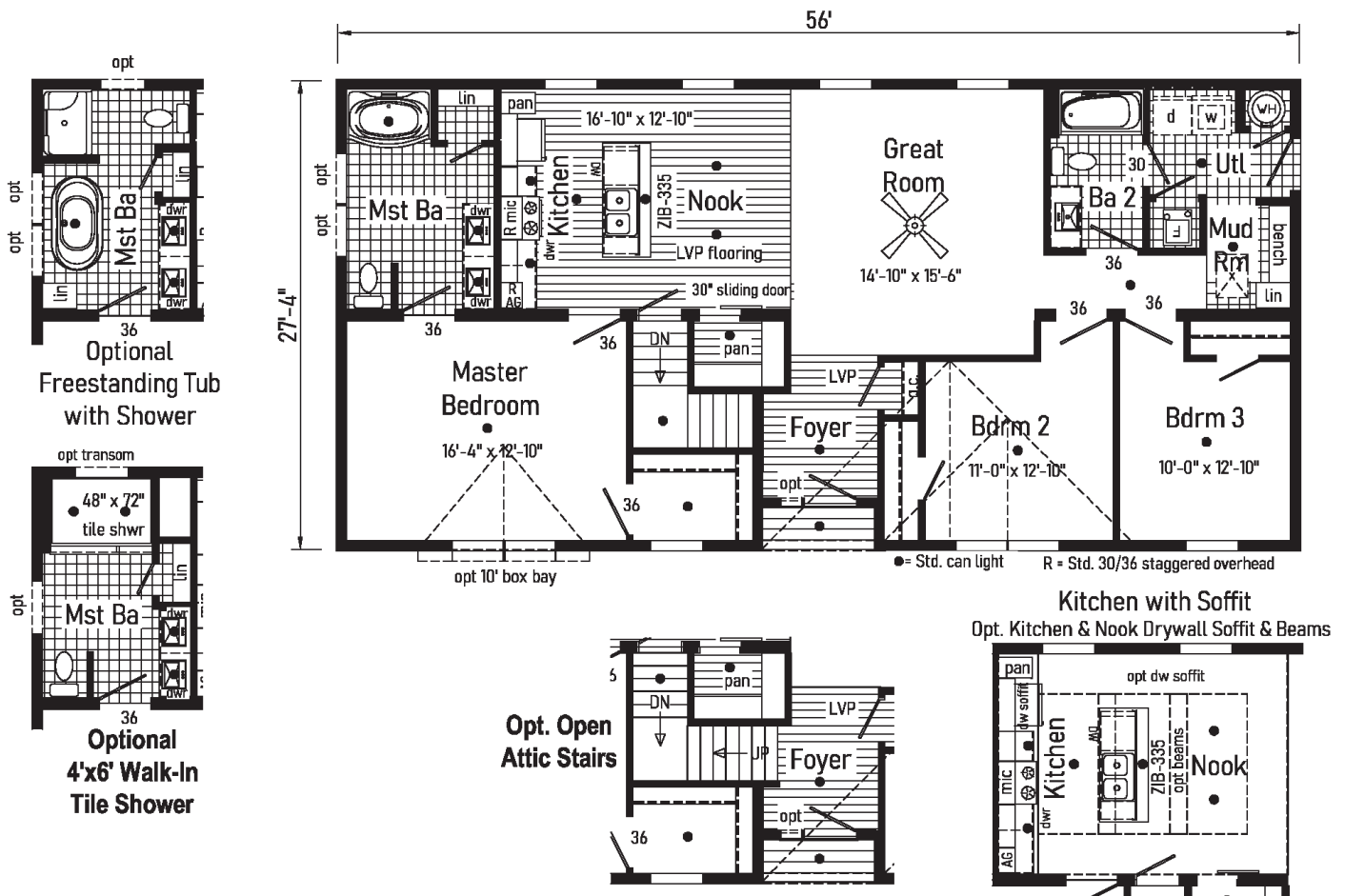
2P2702R
28x52 Approx. 1405 sq ft



03

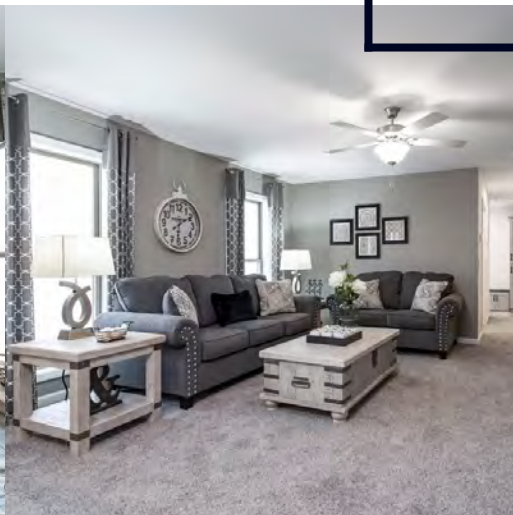
Belle Àme

2P2703R
28x56 Approx. 1515 sq ft



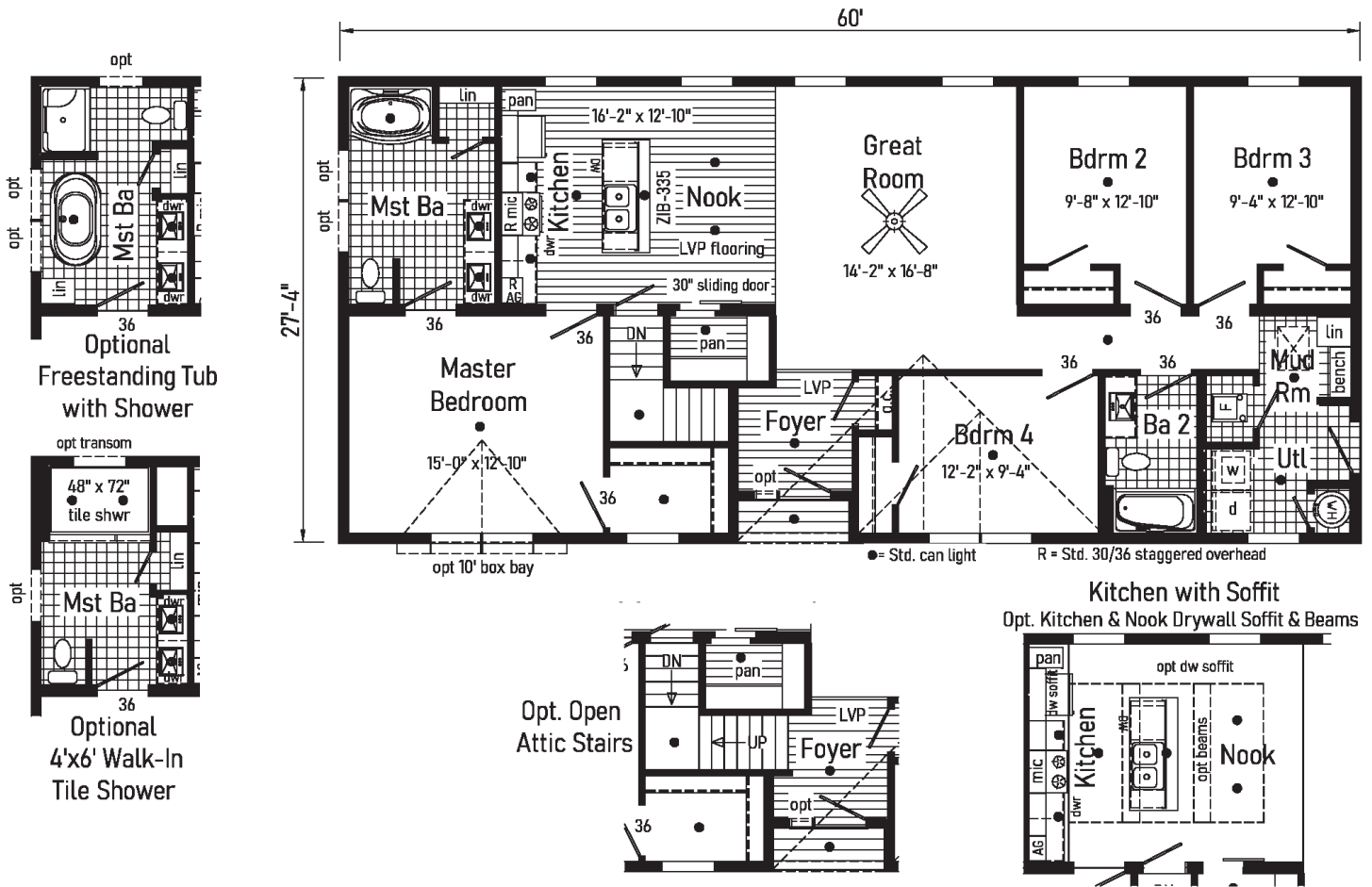


Scan to Watch Video!



04 Belle Àme

2P2704R
 28x60 Approx. 1624 sq ft

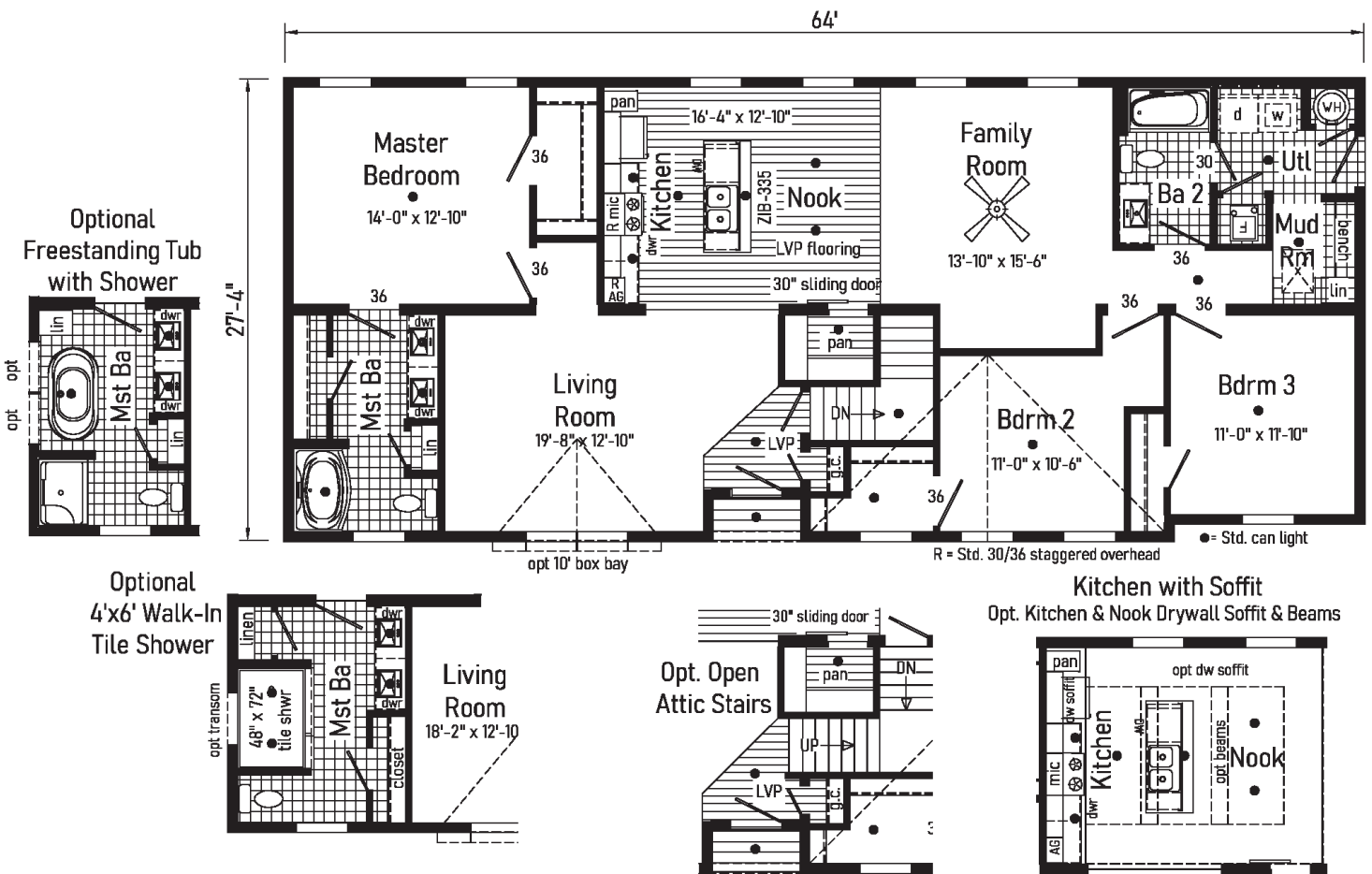




05

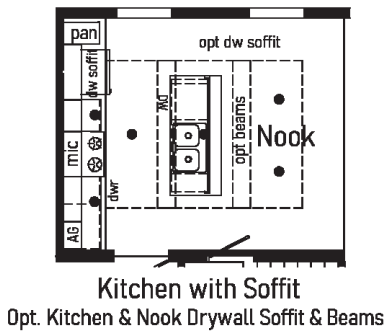
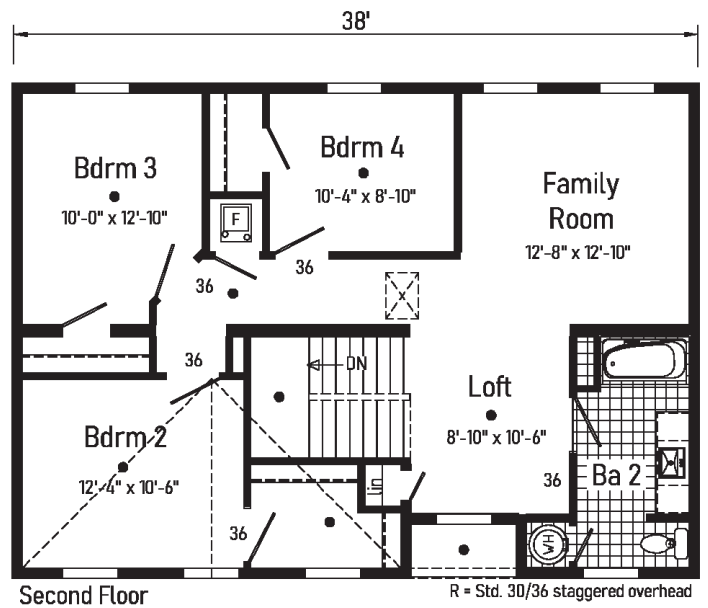
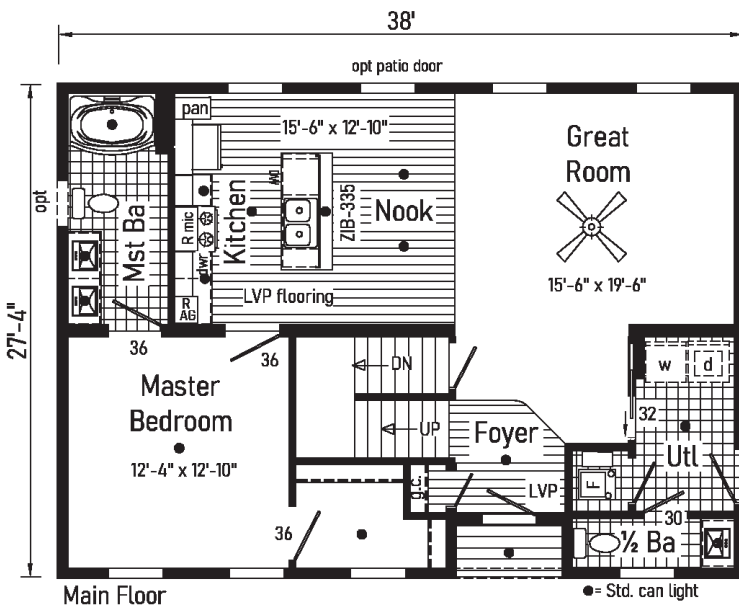
Belle Àme

2P2705R
28x64 Approx. 1724 sq ft



06 Belle Àme

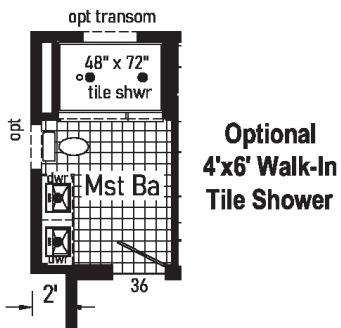
6P2701R
28x38 Approx. 2042 sq ft



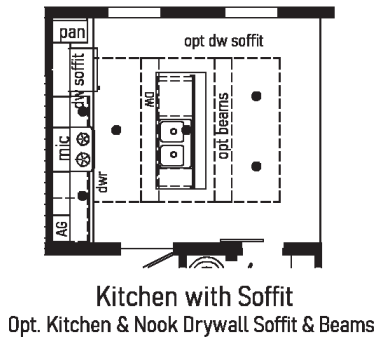


Belle Àme

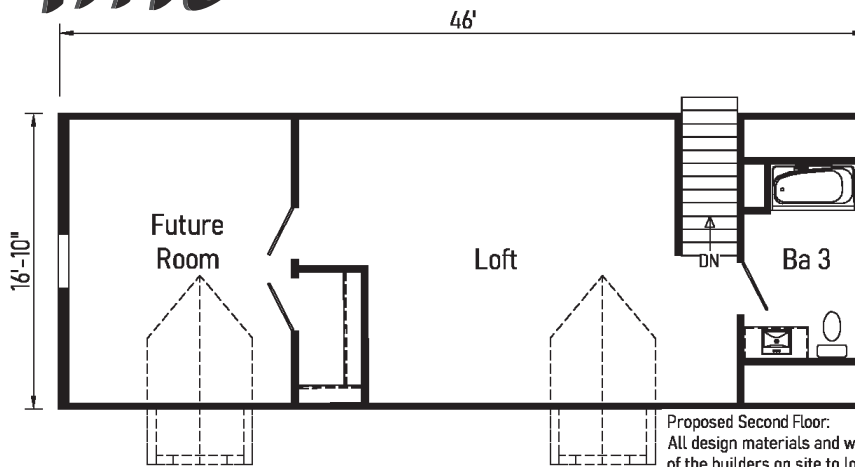
2PC2701R
28x46 Approx. 1257 sq ft



**Optional
 4'x6' Walk-In
 Tile Shower**

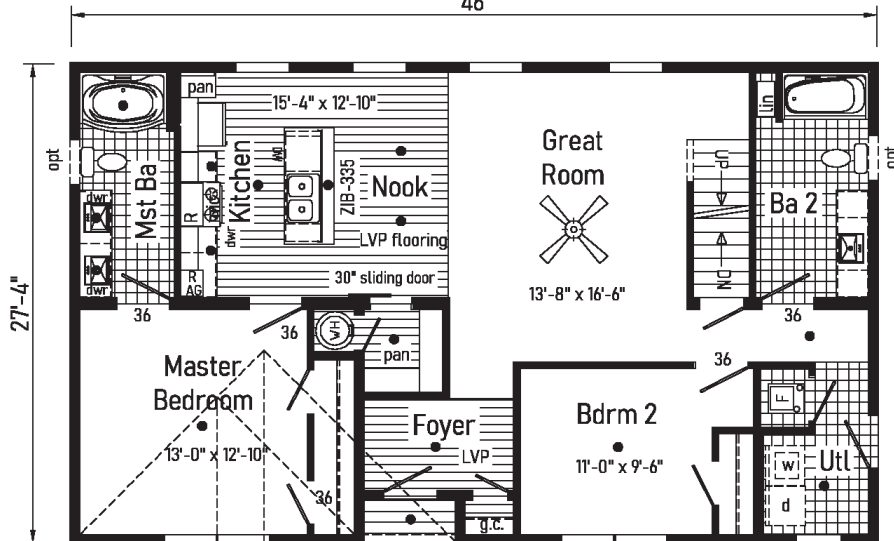


Kitchen with Soffit
 Opt. Kitchen & Nook Drywall Soffit & Beams



SECOND FLOOR

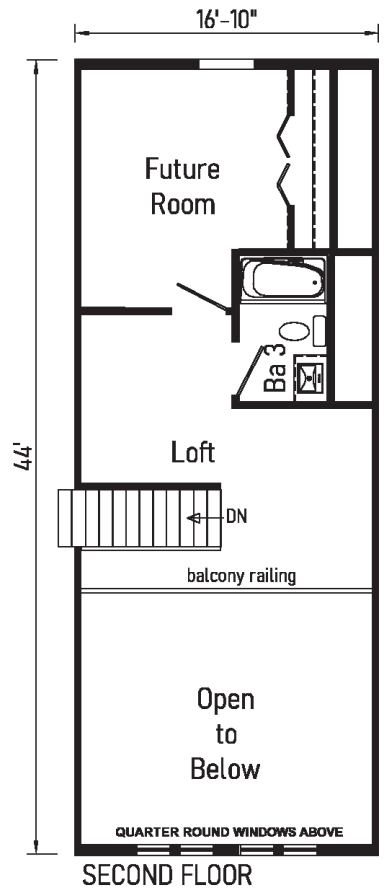
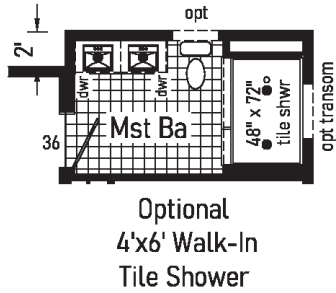
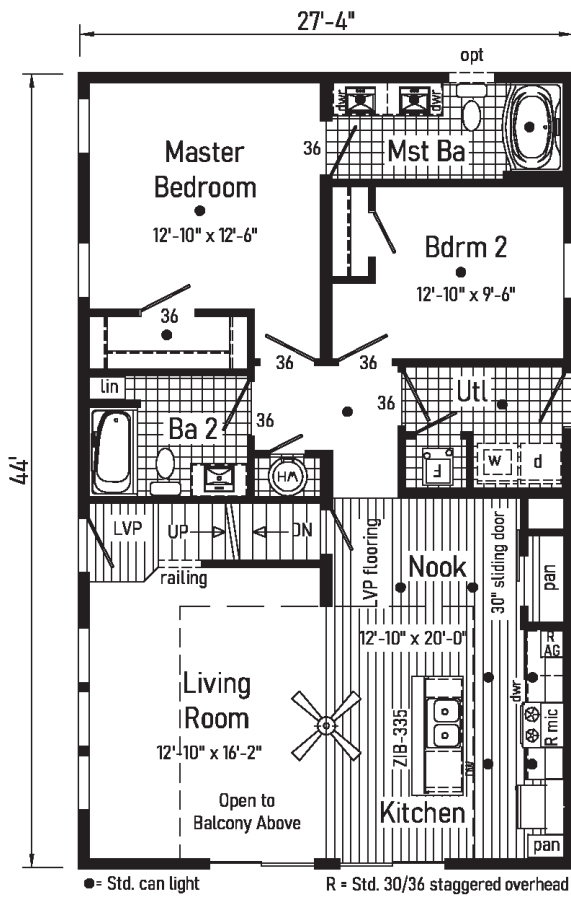
Proposed Second Floor:
 All design materials and work to be the responsibility of the builders on site to local codes. Light, vent, egress, heating and plumbing are the responsibility of the builder.



● = Std. can light R = Std. 30/36 staggered overhead

08 Belle Àme

2PC2702R
28x44 Approx. 1203 sq ft

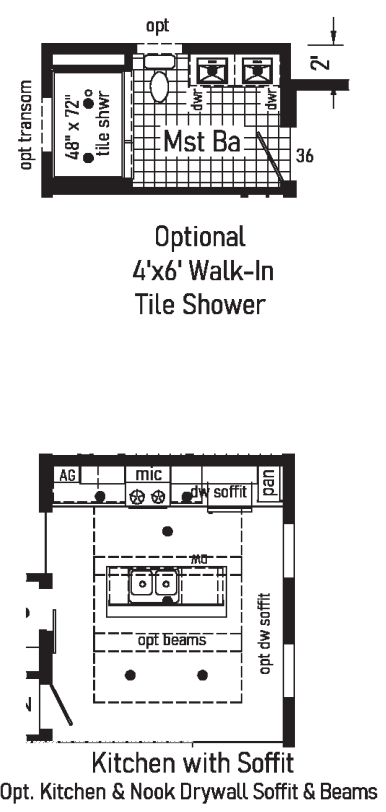
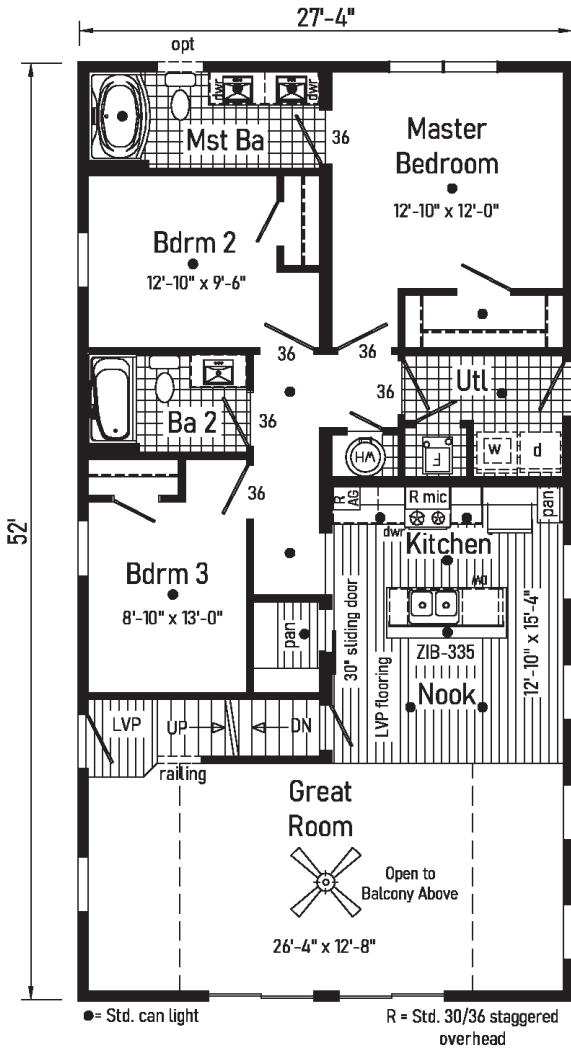


Proposed Second Floor:
 All design materials and work to be the responsibility of the builders on site to local codes. Light, vent, egress, heating and plumbing are the responsibility of the builder.

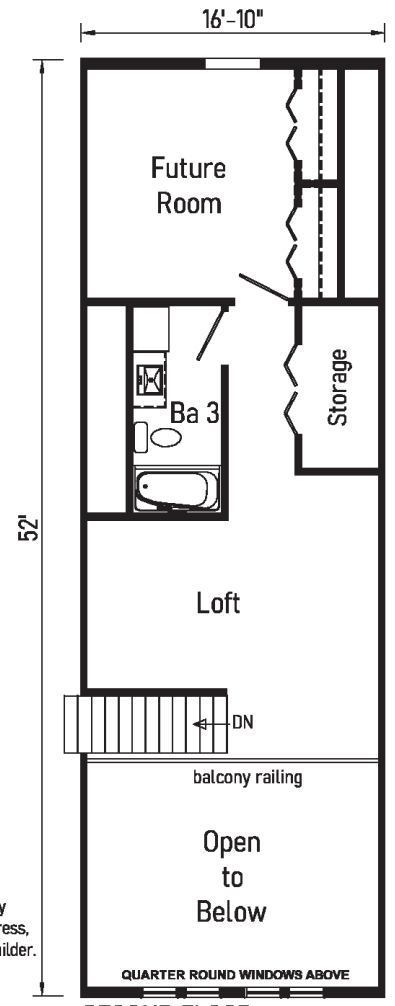


09 Belle Ame

2PC2703R
28x52 Approx. 1421 sq ft



Proposed Second Floor:
 All design materials and work to be the responsibility of the builders on site to local codes. Light, vent, egress, heating and plumbing are the responsibility of the builder.



SECOND FLOOR



2023

PENNWEST
reserve
R

Pennwest Homes
4 Pennwest Way Route 38
Emlenton, PA 16373
www.pennwesthomes.com

Belle Àme

Connect with Us!



All descriptive representations of the products on this brochure are believed to be correct at the time of publication. However, due to continued product improvement and changes in suppliers design and production, accuracy cannot be guaranteed. Therefore, equipment colors, material specifications, prices and model availability are subject to change without notice. All information and images contained in this brochure are property of Commodore Homes and for the use by active dealers of the company only. © CH 9/22

PENNWEST

reserve

R

2023

La Bella Casa



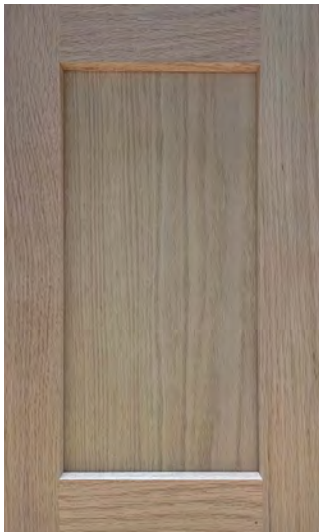
PENNWEST
H O M E S

Evermore

Custom Cabinetry



French Country Oak
Mission Flat Panel

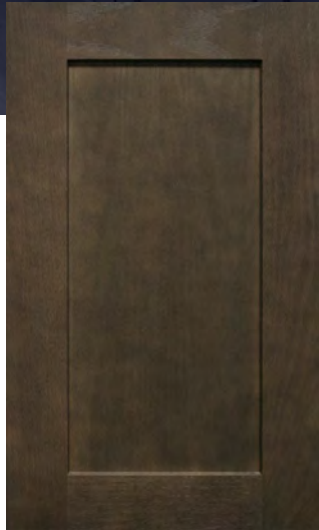


Rustic Elm
Mission Flat Panel



Shadow Grey
Mission Flat Panel

2



Barnwood Oak
Mission Flat Panel



White
Mission Flat Panel

Visit www.KCMA.org
for more information

Reserve La Bella Casa



Precision Cut and Dadoed Construction Fastened and Hot Glued - Ensures a Long Lasting and Square Cabinet Box

3/4 Overlaid Cabinet Doors & Drawer - Limited Exposure of Cabinet Stiles

3/4" Thick Shelving with Finished Edges - Prevents Warping of Shelves

Base and Wall Cabinet Adjustable Shelving - Fit Your Lifestyle

3/4" Face Frames - Durable and Securely Holds Fasteners for Long Lasting Use

Pocket Screws - Ensure a Strong and Square Frame

Dove-Tail Constructed Drawers - Superior Drawer Strength

Undermount Soft Close Drawer Guides

Concealed and Recessed Hinges - Superior Door Strength

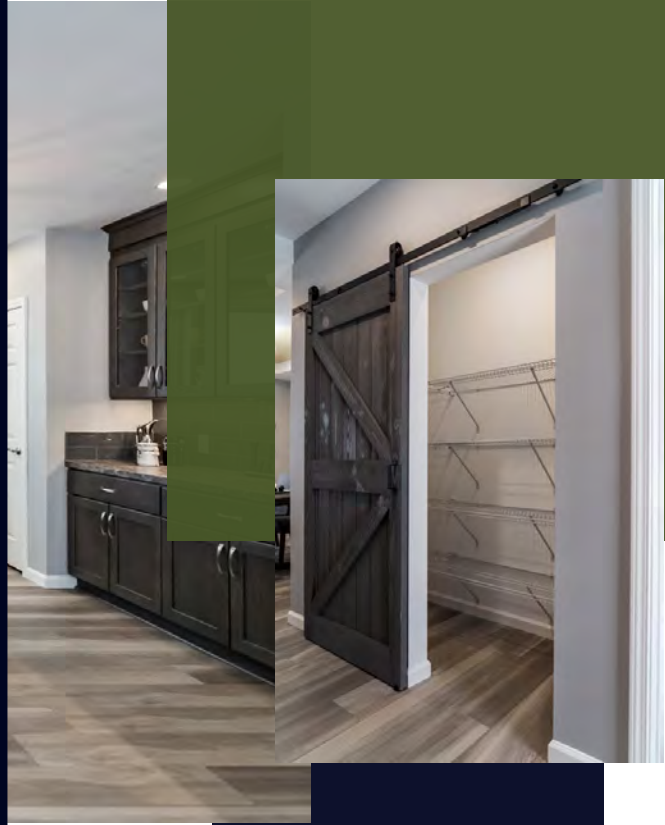
Recessed Toe Kick - Work at Counters with Ease

No Exposed Hanging Cleats- More Storage and Cleaner Look

KCMA Testing

- Overhead Cabinets Rated to 500 pound Capacity
- Drawers Opened 28,000 Times with Weight
- Cabinet Doors Opened 25,000 Times
- Extreme Testing of Cabinet Finish

Evermore Custom Cabinets endure a series of rigorous tests, measuring structural integrity. Cabinet doors, drawers and even the finish are tested before earning the KCMA Cabinet Certification.

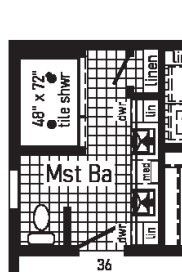




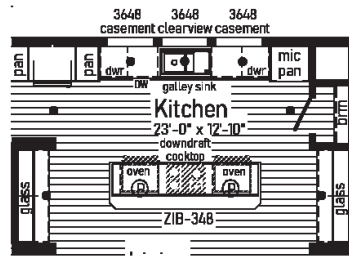
01

La Bella Casa

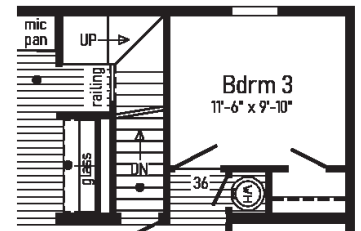
2P2801R
28x64 Approx. 1749 sq ft



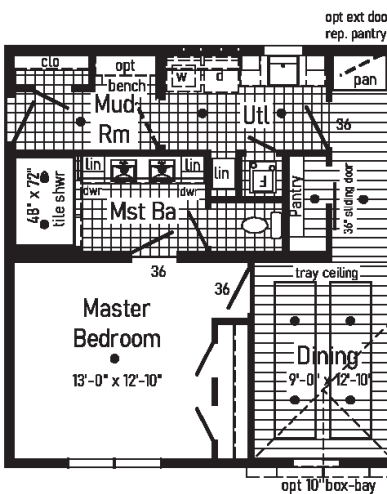
Optional
 4'x6' Walk-In
 Tile Shower



Alternate Kitchen

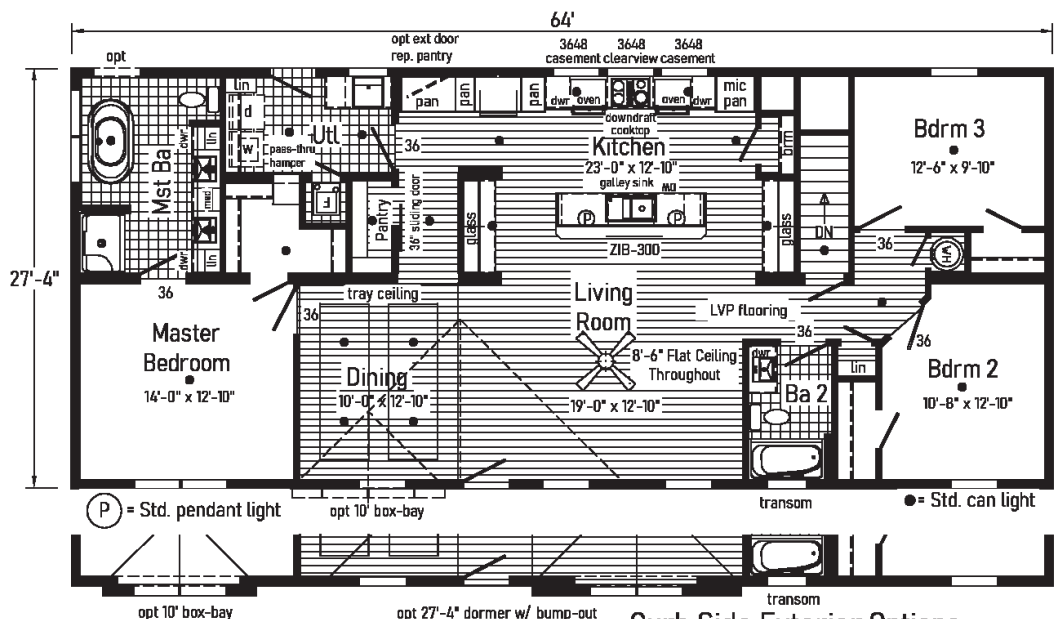


Opt. Open
 Attic Stairs
 Only available
 with 12/12 roof



Optional End Entry Utility with
 4' x 6' Walk-In Tile Shower

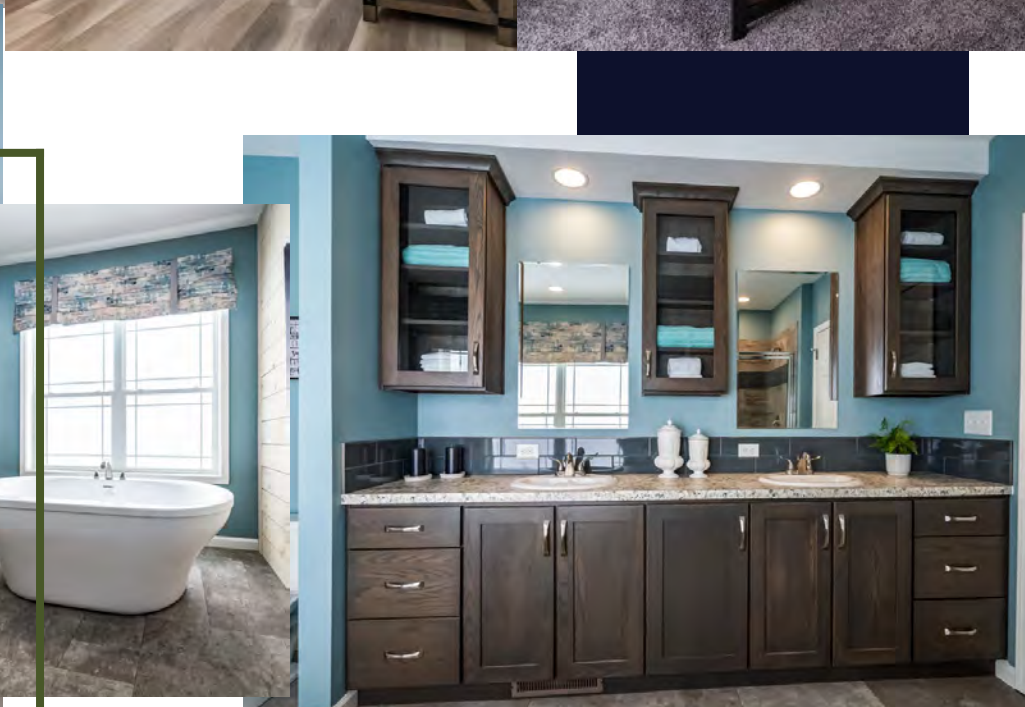
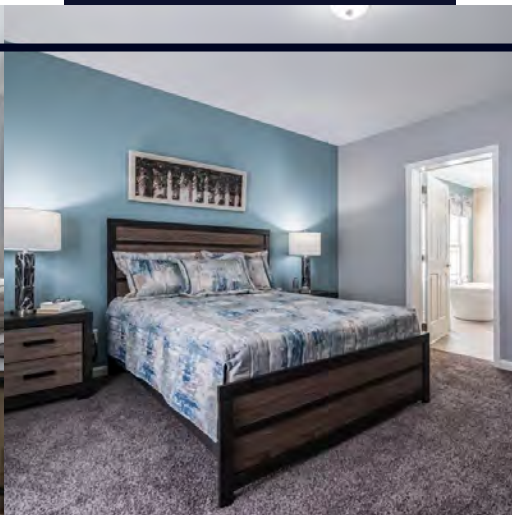
Note: Changes Living Room size to 18'-8" x 12'-10".



Curb Side Exterior Options



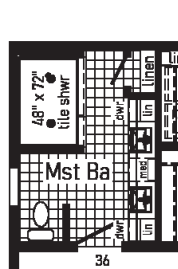
Scan to Watch Video!



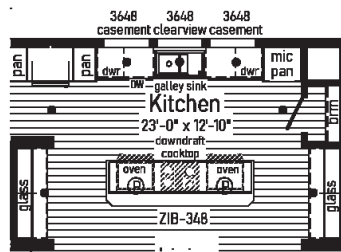


02 La Bella Casa

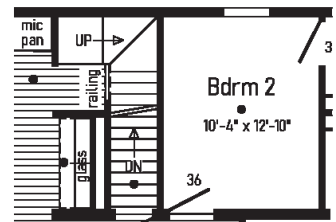
2P2802R
28x68 Approx. 1859 sq ft



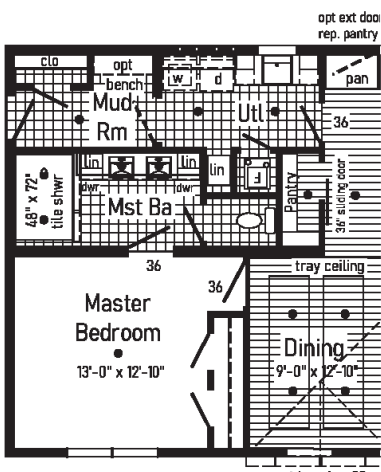
**Optional
 4'x6' Walk-In
 Tile Shower**



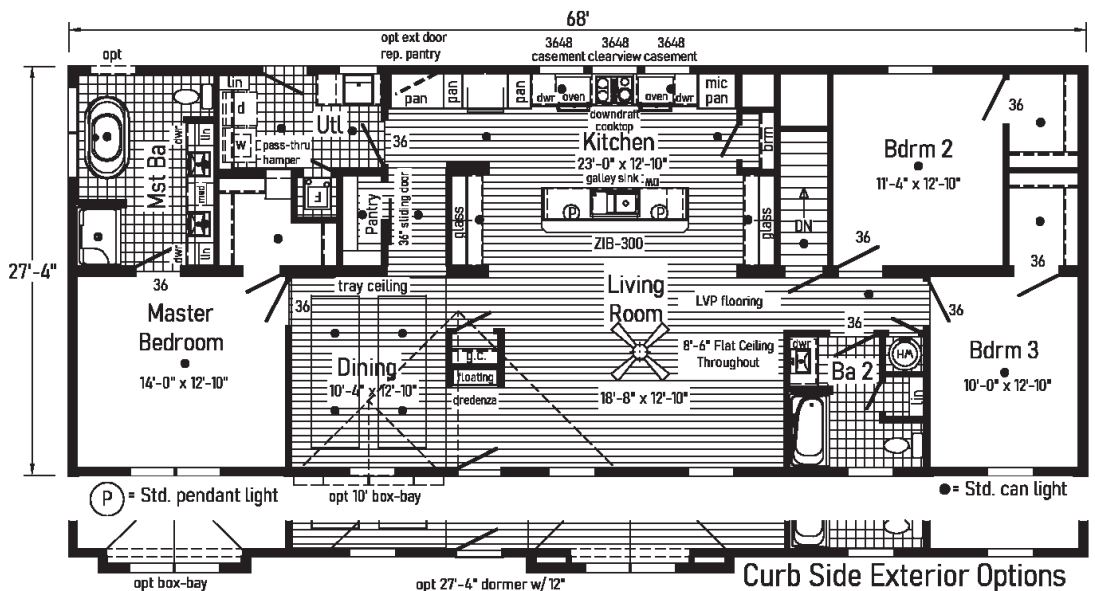
Alternate Kitchen



**Opt. Open
 Attic Stairs**
 Only available
 with 12/12 roof



**Optional End Entry Utility with
 4' x 6' Walk-In Tile Shower**

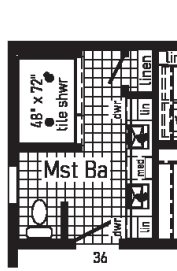


Curb Side Exterior Options

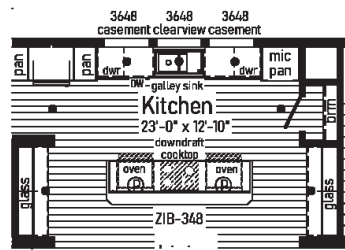


03 La Bella Casa

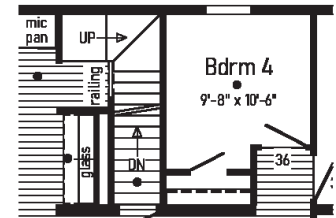
2P2803R
28x72 Approx. 1968 sq ft



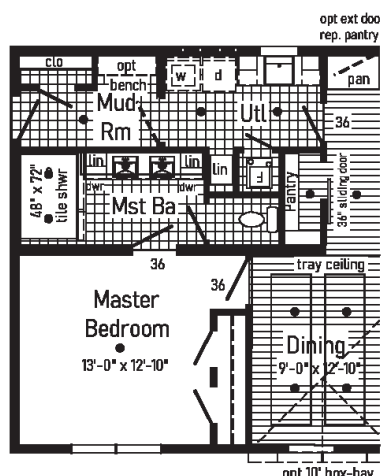
Optional
 4'x6' Walk-In
 Tile Shower



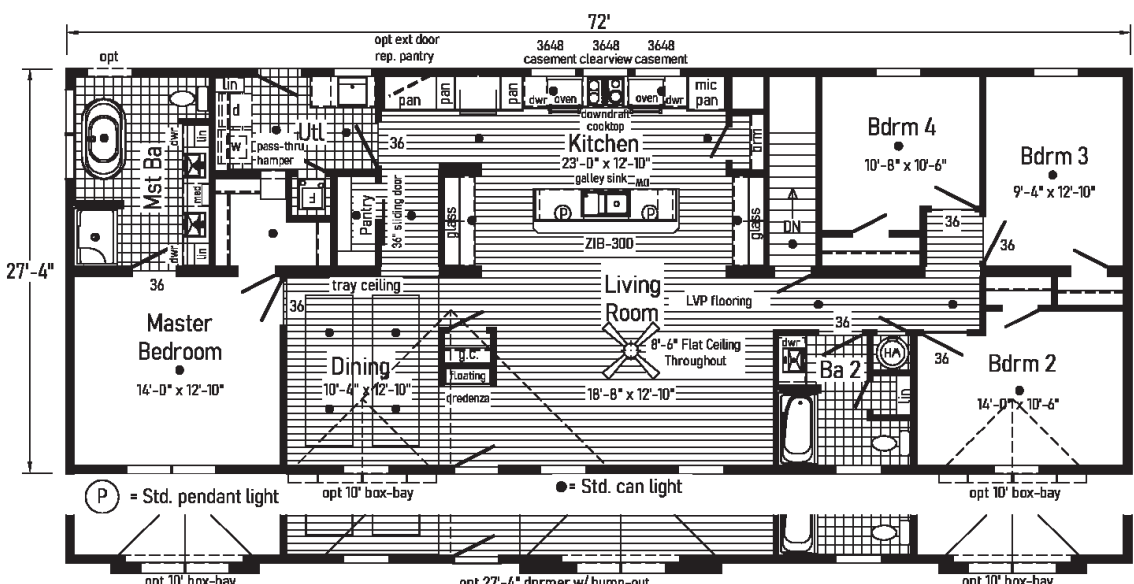
Alternate Kitchen



Opt. Open
 Attic Stairs
 Only available
 with 12/12 roof



Optional End Entry Utility with
 4' x 6' Walk-In Tile Shower



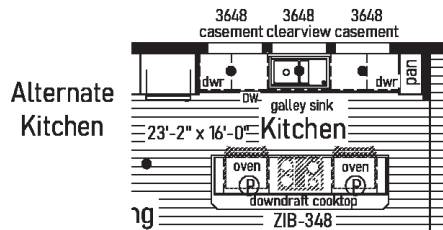
(P) = Std. pendant light ● = Std. can light

opt 10' box-bay opt 27'-4" dprmer w/ bump-out opt 10' box-bay

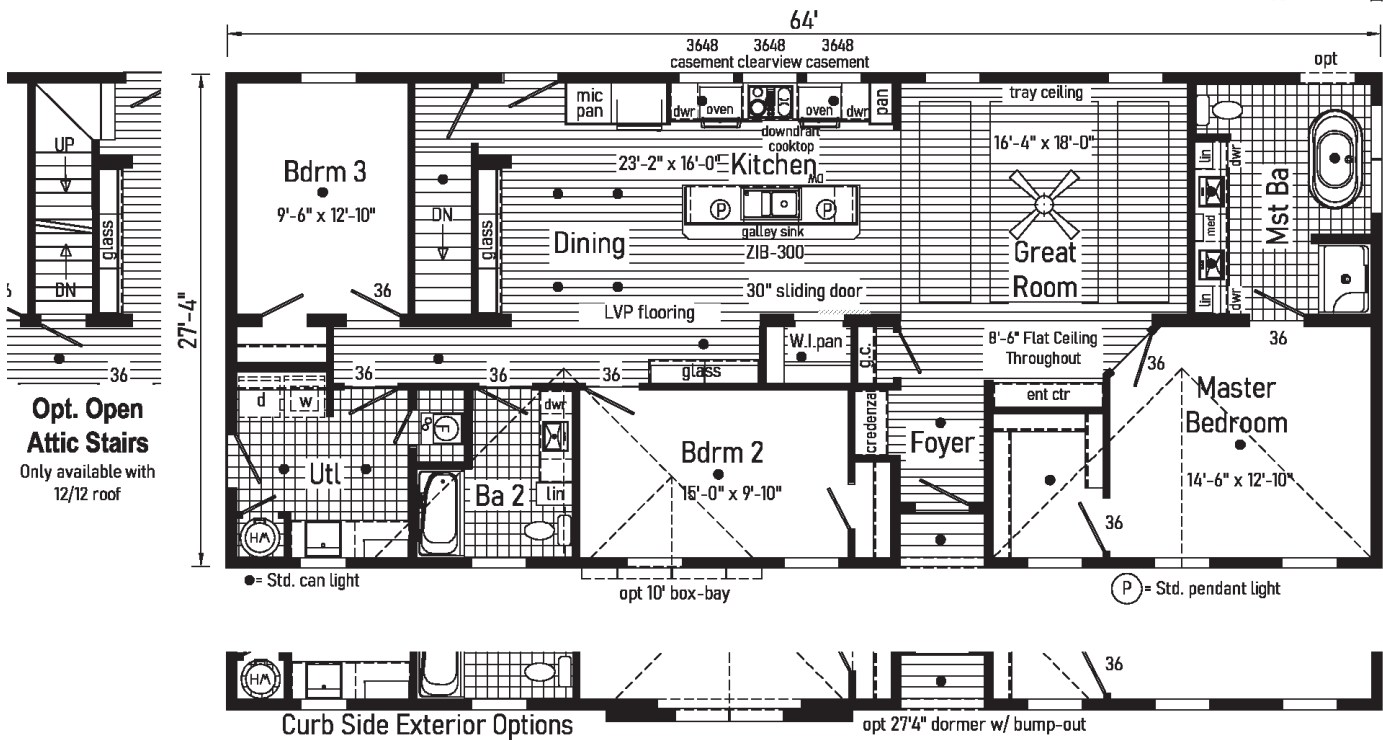
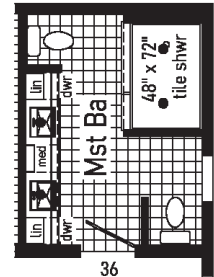
Curb Side Exterior Options

04 La Bella Casa

2P2804R
28x64 Approx. 1735 sqft

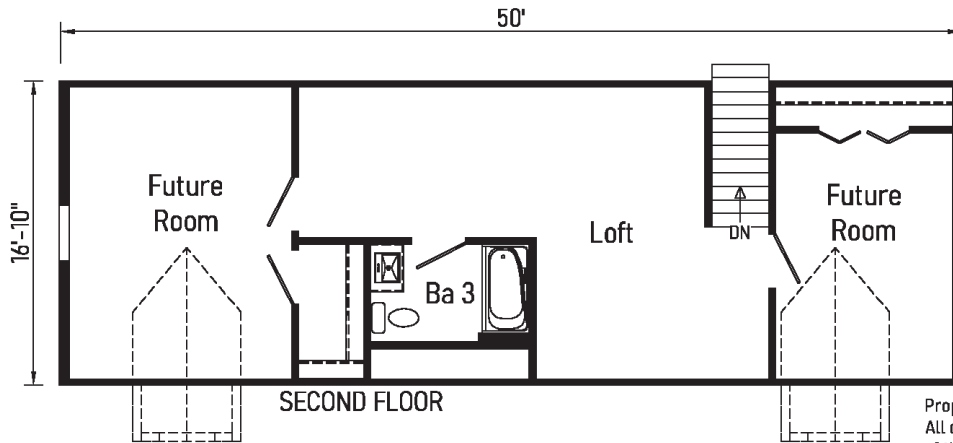


**Optional
 4'x6' Walk-In
 Tile Shower**

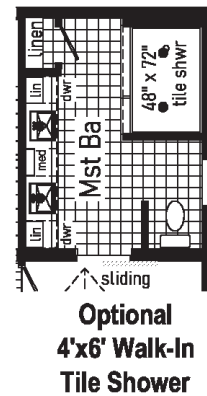
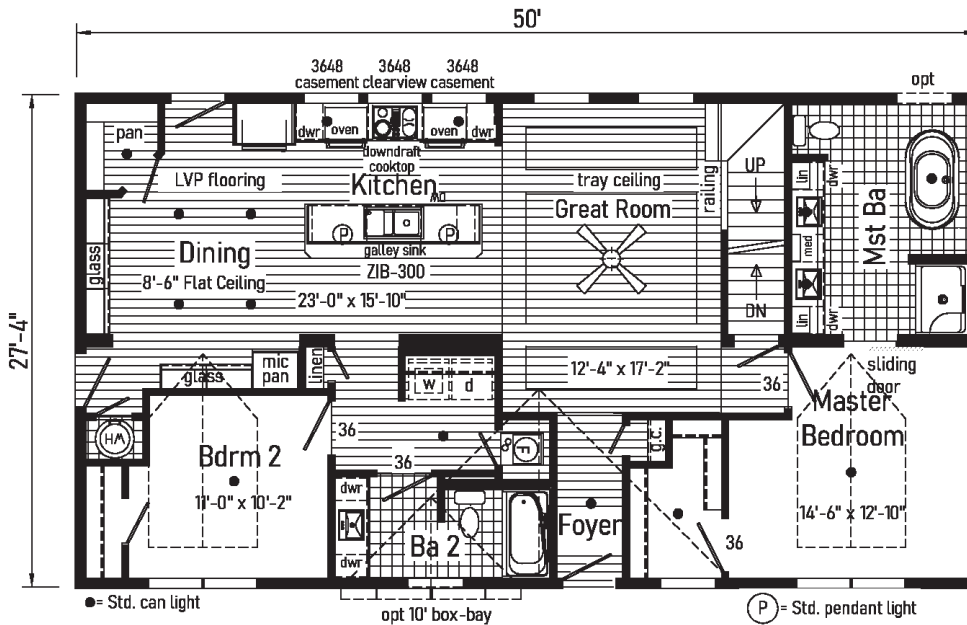
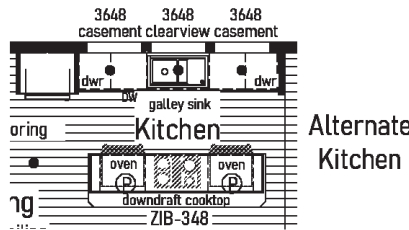


05 La Bella Casa

2PC2801R
28x50 Approx. 1367 sq ft



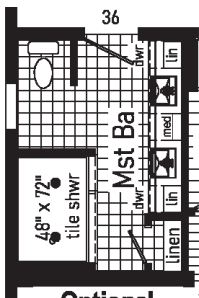
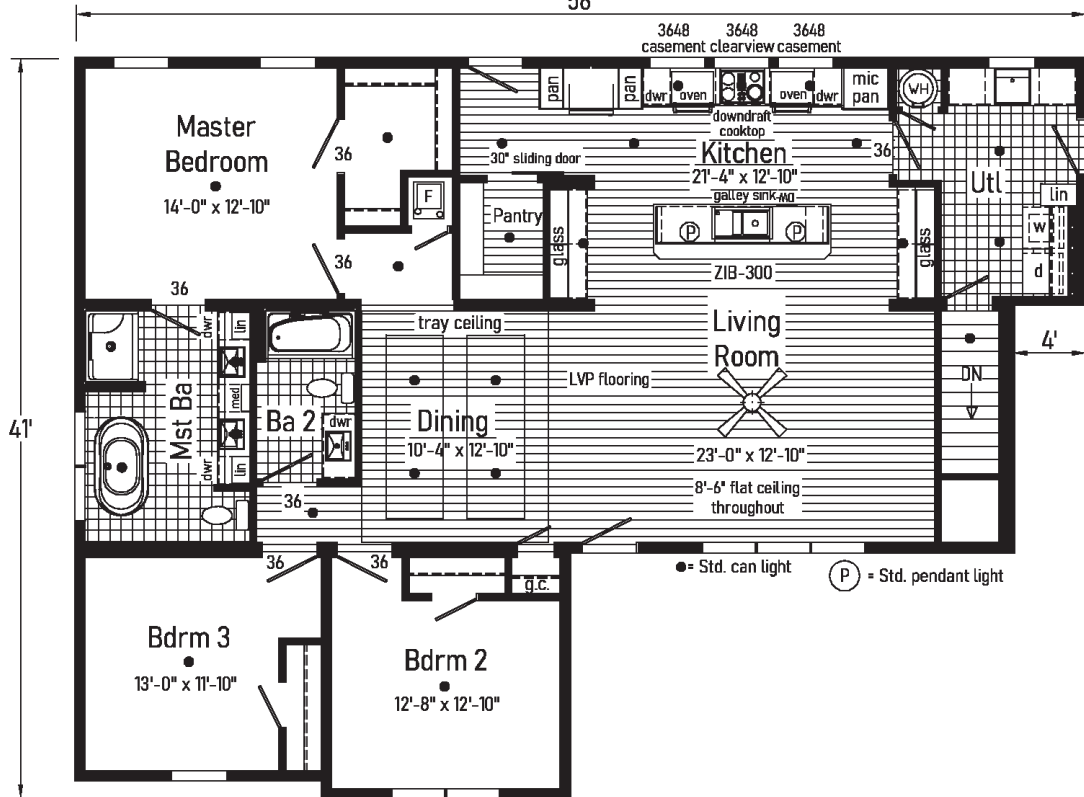
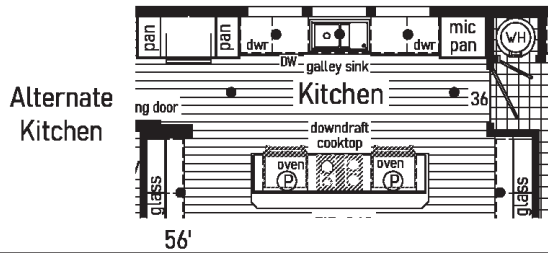
Proposed Second Floor:
 All design materials and work to be the responsibility of the builders on site to local codes. Light, vent, egress, heating and plumbing are the responsibility of the builder.





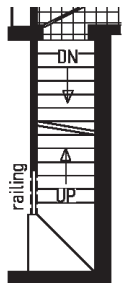
06 La Bella Casa

3P2801R
42x56/52 Approx. 1836 sq ft



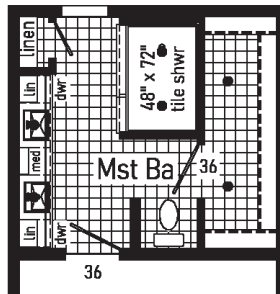
**Optional
 4'x6' Walk-In
 Tile Shower**

**Opt. Open
 Attic Stairs**
 Only available with
 12/12 roof

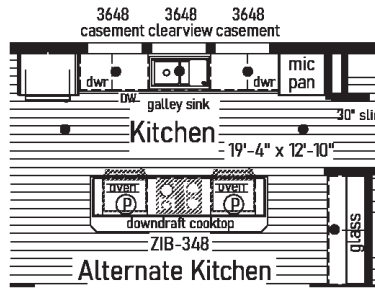


07 La Bella Casa

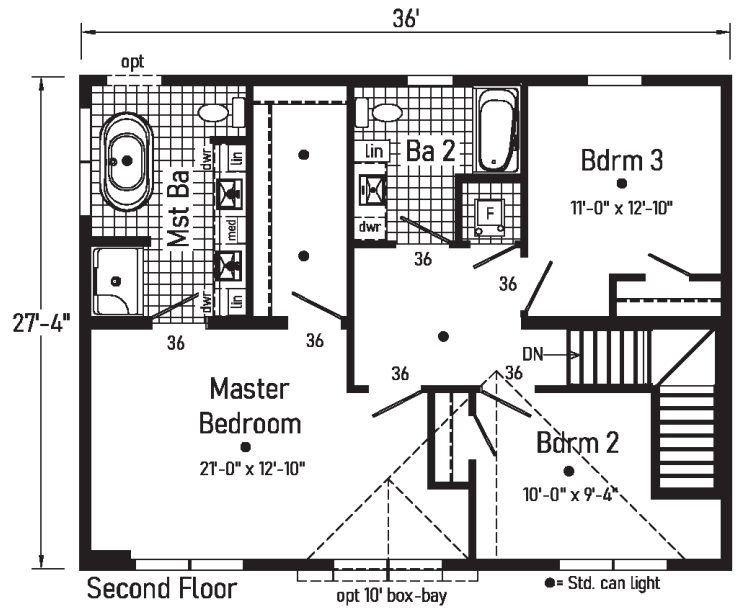
6P2801R
28x36 Approx. 1968 sq ft



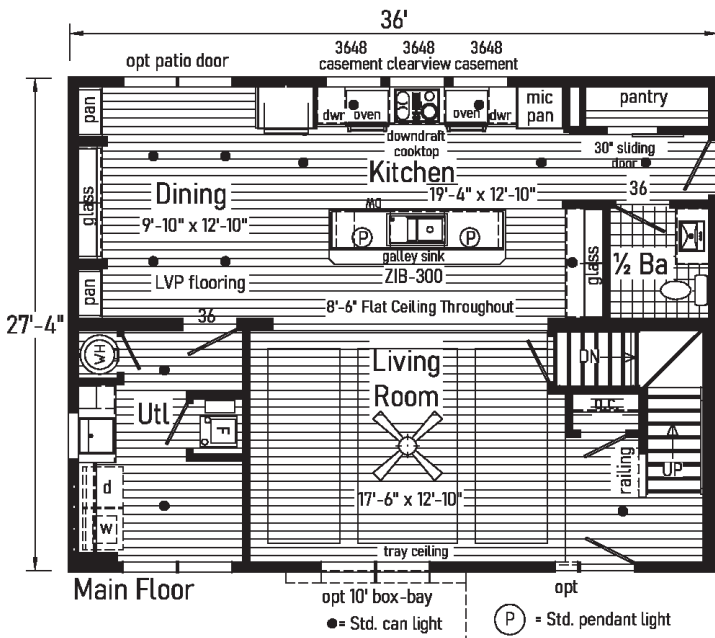
**Optional
 4'x6' Walk-In
 Tile Shower**



Alternate Kitchen



Second Floor



Main Floor

Garage by
 Others



inHouse
experience



2023

PENNWEST
reserve
R

Pennwest Homes
4 Pennwest Way Route 38
Emlenton, PA 16373
www.pennwesthomes.com



La Bella Casa

Connect with Us!



You Tube

PENNWEST

reserve

R

2023

Le Fantastique

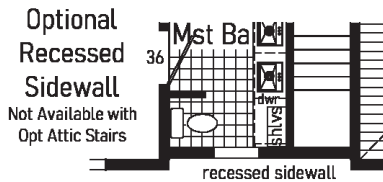
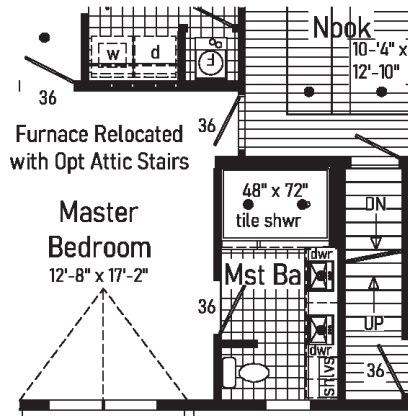
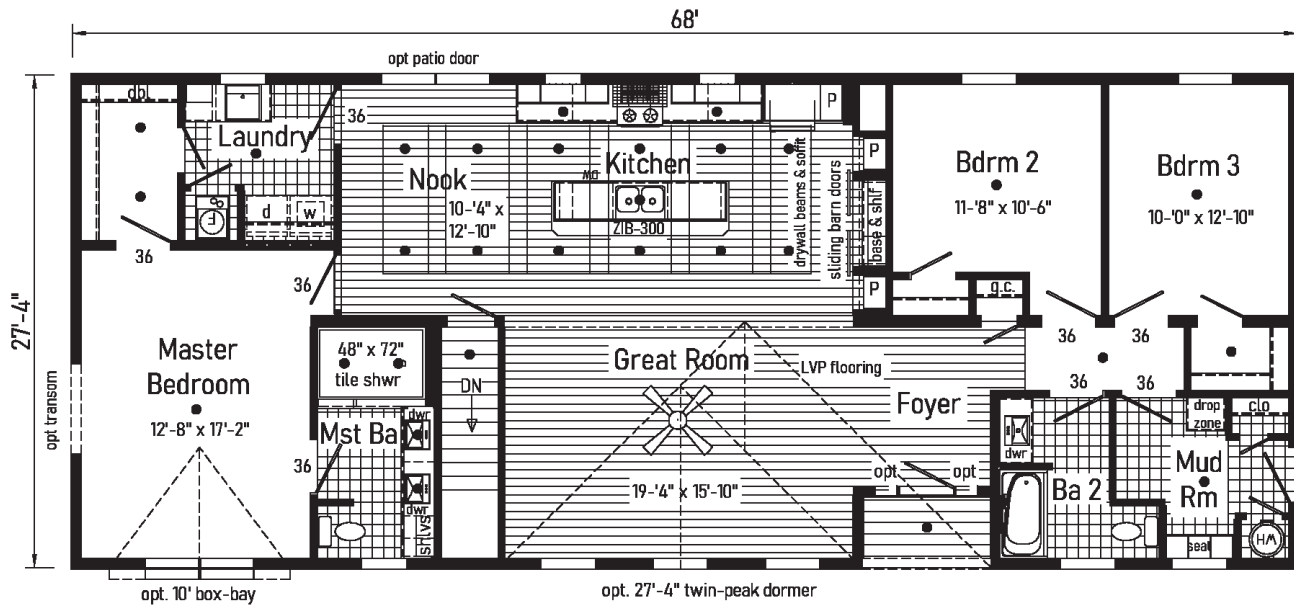


PENNWEST
H O M E S

Grand

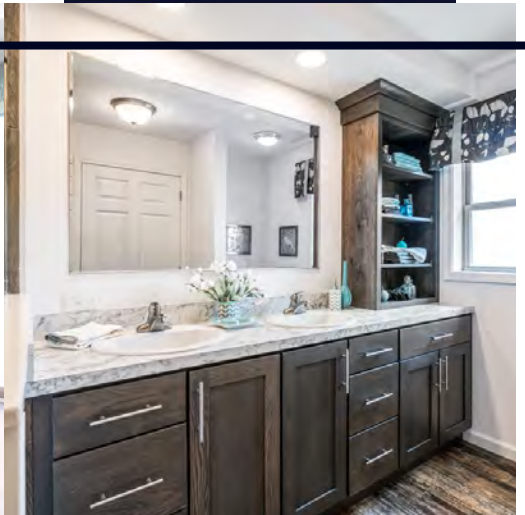
Le Fantastique

2P2603R
28x68 Approx. 1830 sq ft





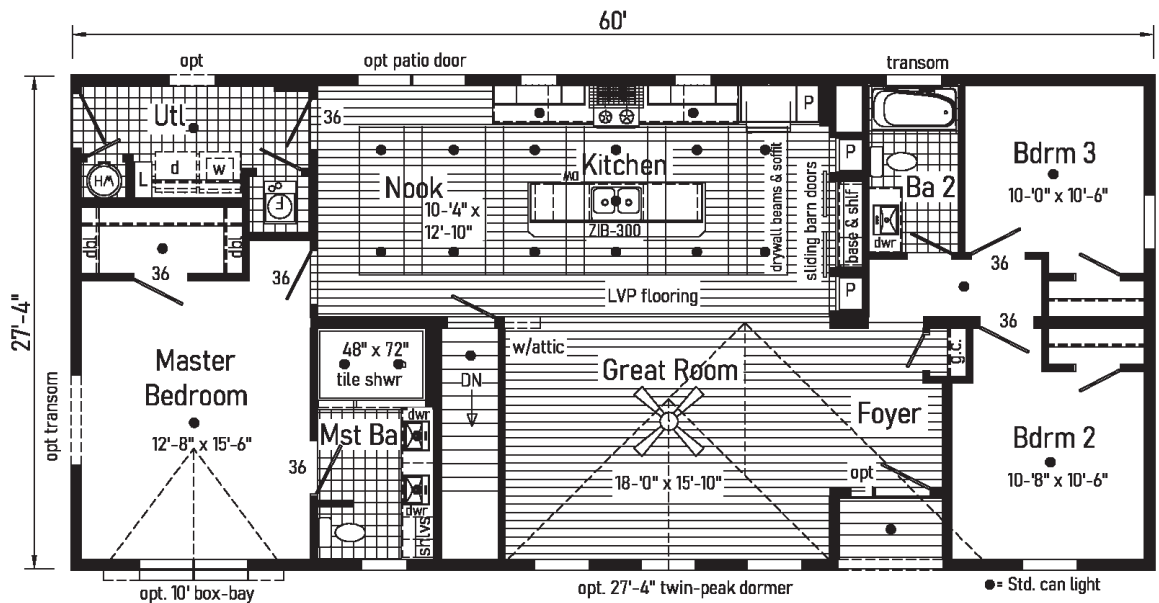
Scan to Watch Video!



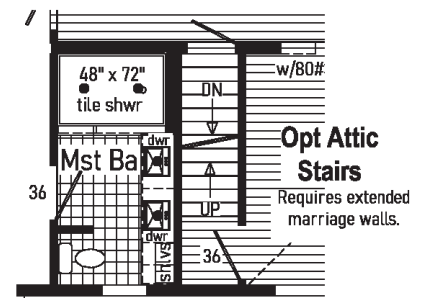
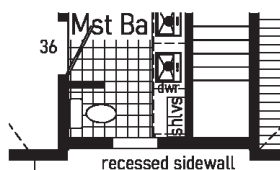


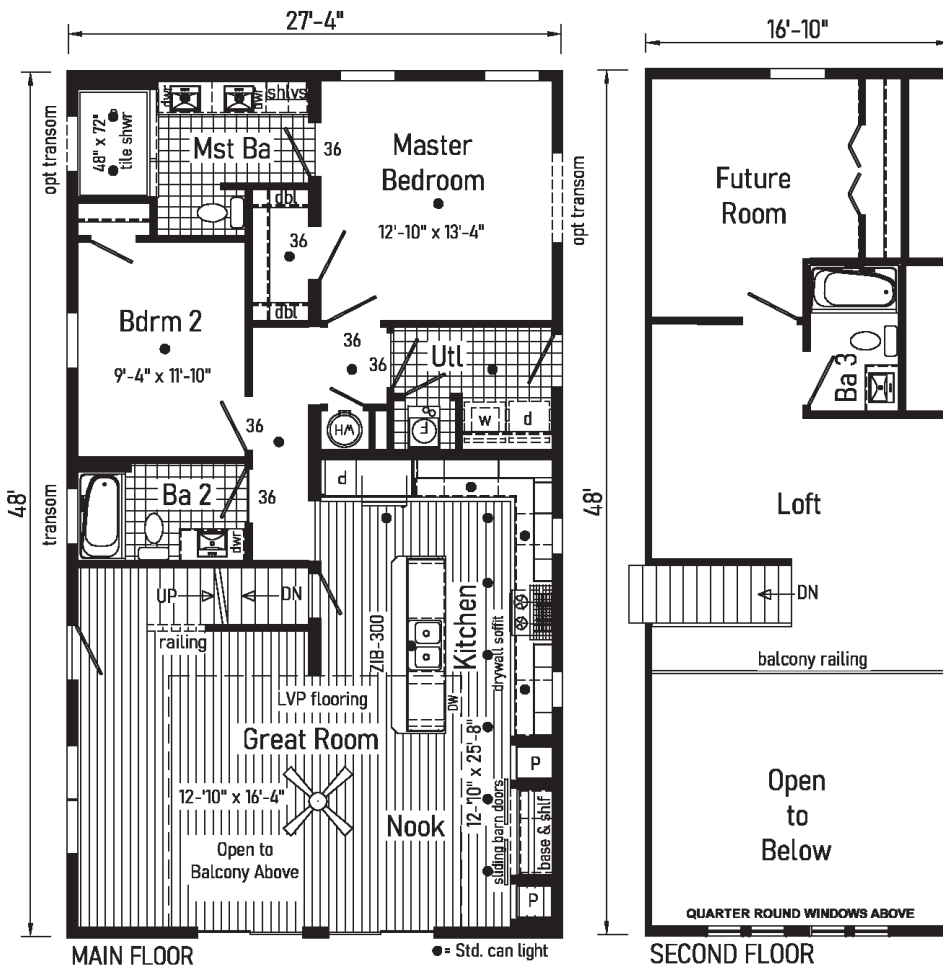
Le Fantastique

2P2604R
28x60 Approx. 1616 sq ft



Optional
 Recessed
 Sidewall
 Not available with
 Opt Attic Stairs.





Deux

Le Fantastique

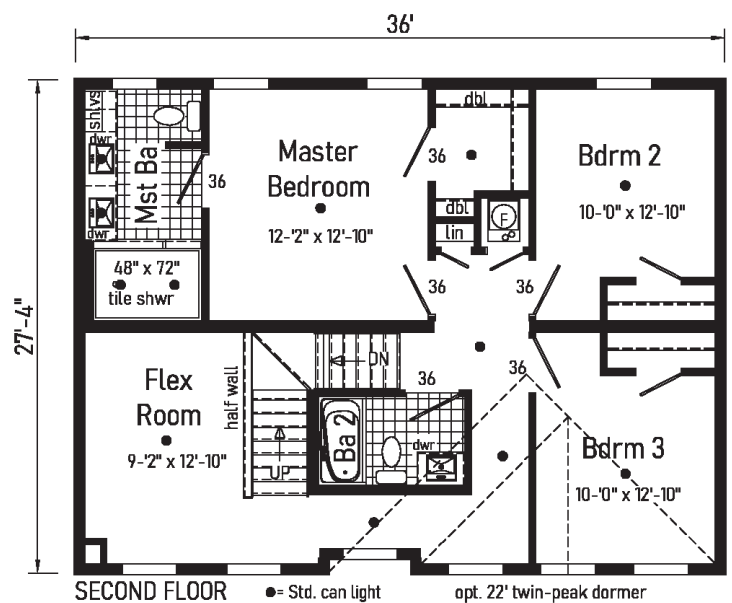
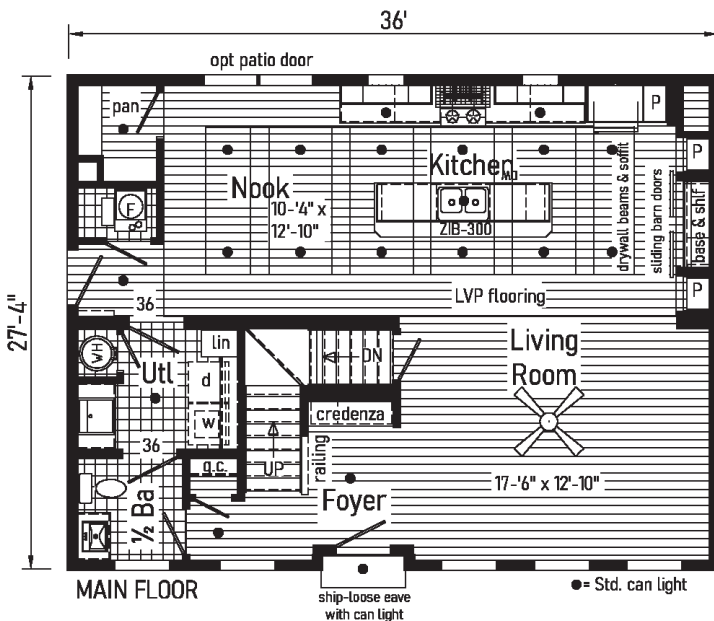
2PC2602R
 28x48 Approx. 1312 sq ft

Proposed Second Floor:
 All design materials and work to be the responsibility of the builders on site to local codes. Light, vent, egress, heating and plumbing are the responsibility of the builder.

Quatre

Le Fantastique

6P2602R
 28x36 Approx. 1960 sq ft

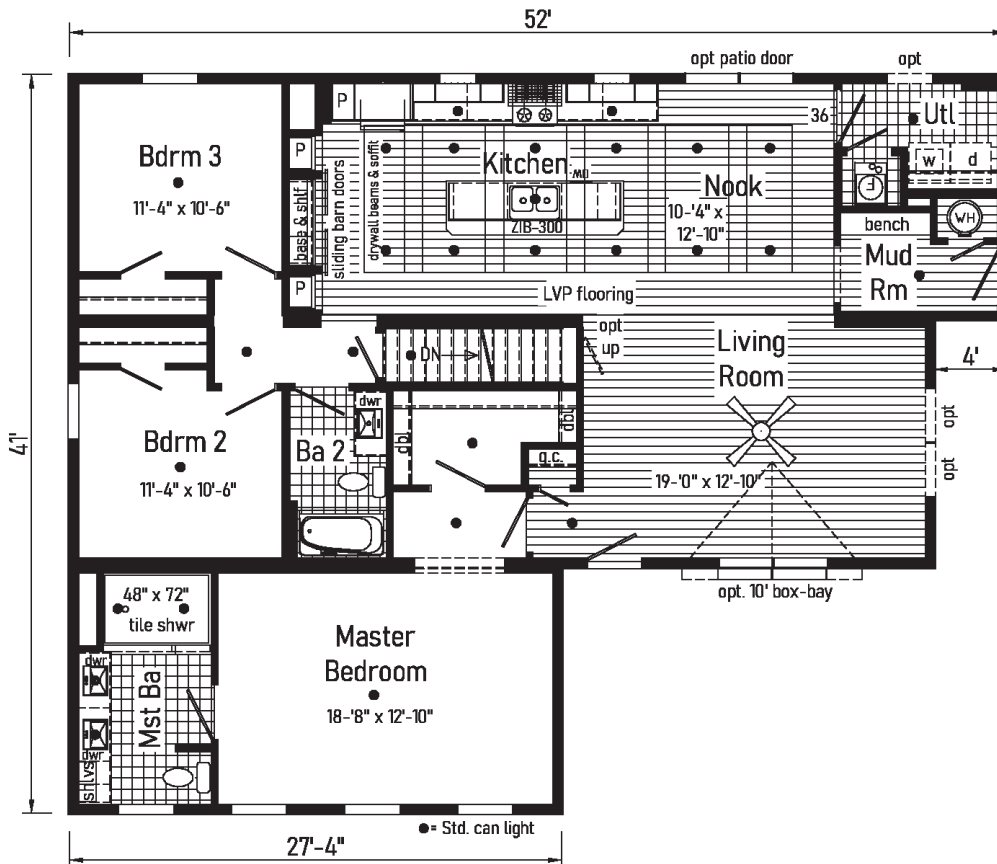




Trois

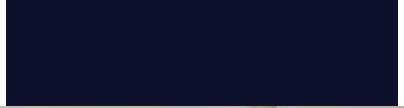
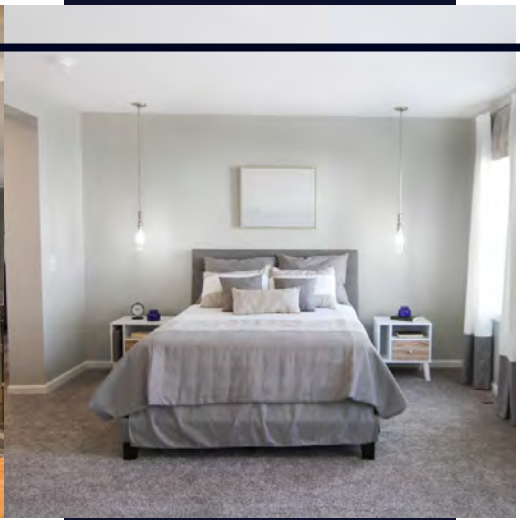
Le Fantastique

3P2602R
42x52/48 Approx. 1740 sq ft





Scan to Watch Video!





inHouse
experience



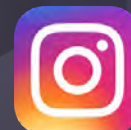
2023

PENNWEST
reserve
R

Pennwest Homes
4 Pennwest Way Route 38
Emlenton, PA 16373
www.pennwesthomes.com

Le Fantastique

Connect with Us!



You Tube

All descriptive representations of the products on this brochure are believed to be correct at the time of publication. However, due to continued product improvement and changes in suppliers design and production, accuracy cannot be guaranteed. Therefore, equipment colors, material specifications, prices and model availability are subject to change without notice. All information and images contained in this brochure are property of Commodore Homes and for the use by active dealers of the company only. © CH 10/22

PENNWEST
reserve

2023

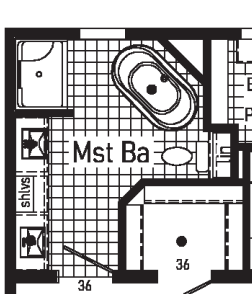
Magnifique



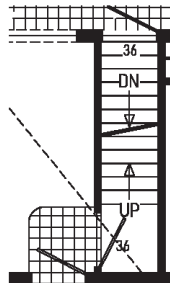


Magnifique

2P2601R
28x58 Approx. 1585 sq ft

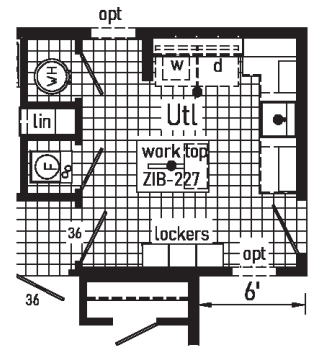
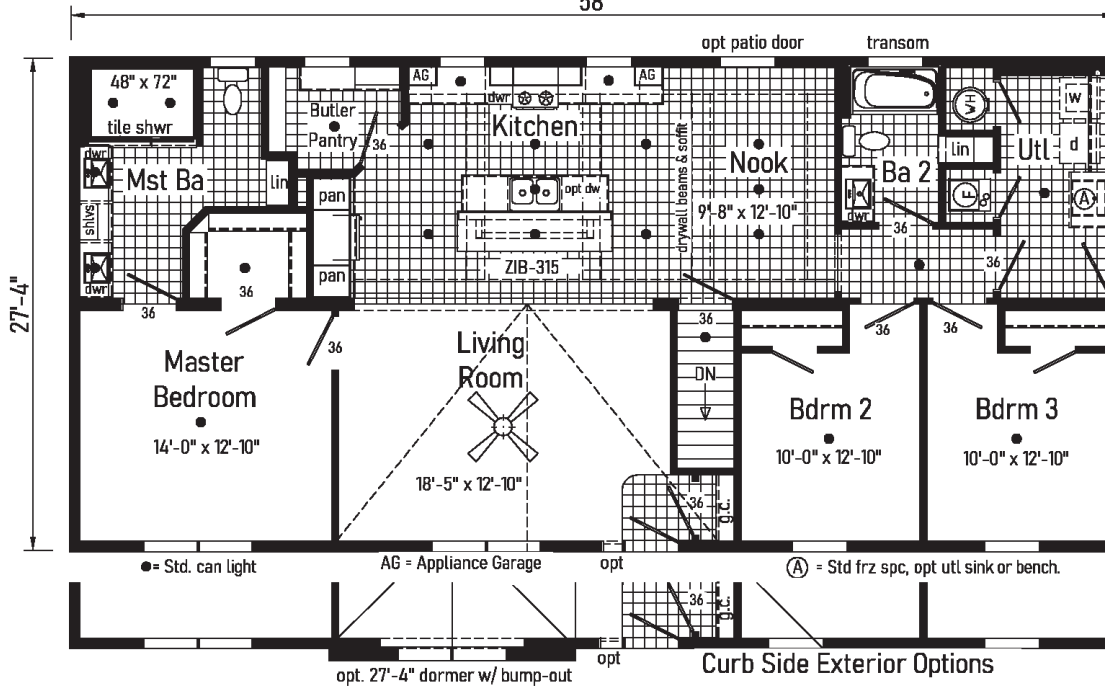


Optional Glamour Bath



Opt Attic Stairs
 (omits g.c.)

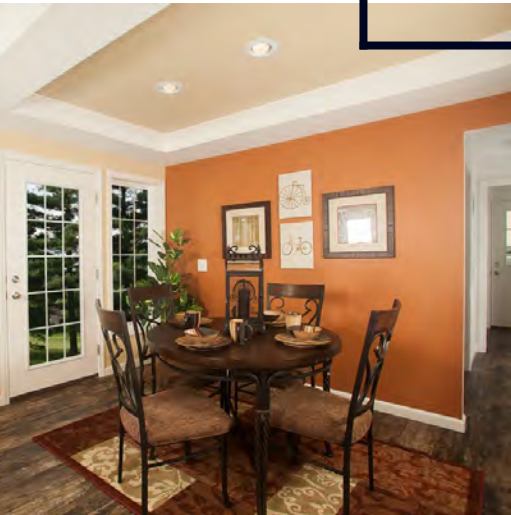
58'



Optional Buanderie Magnifique



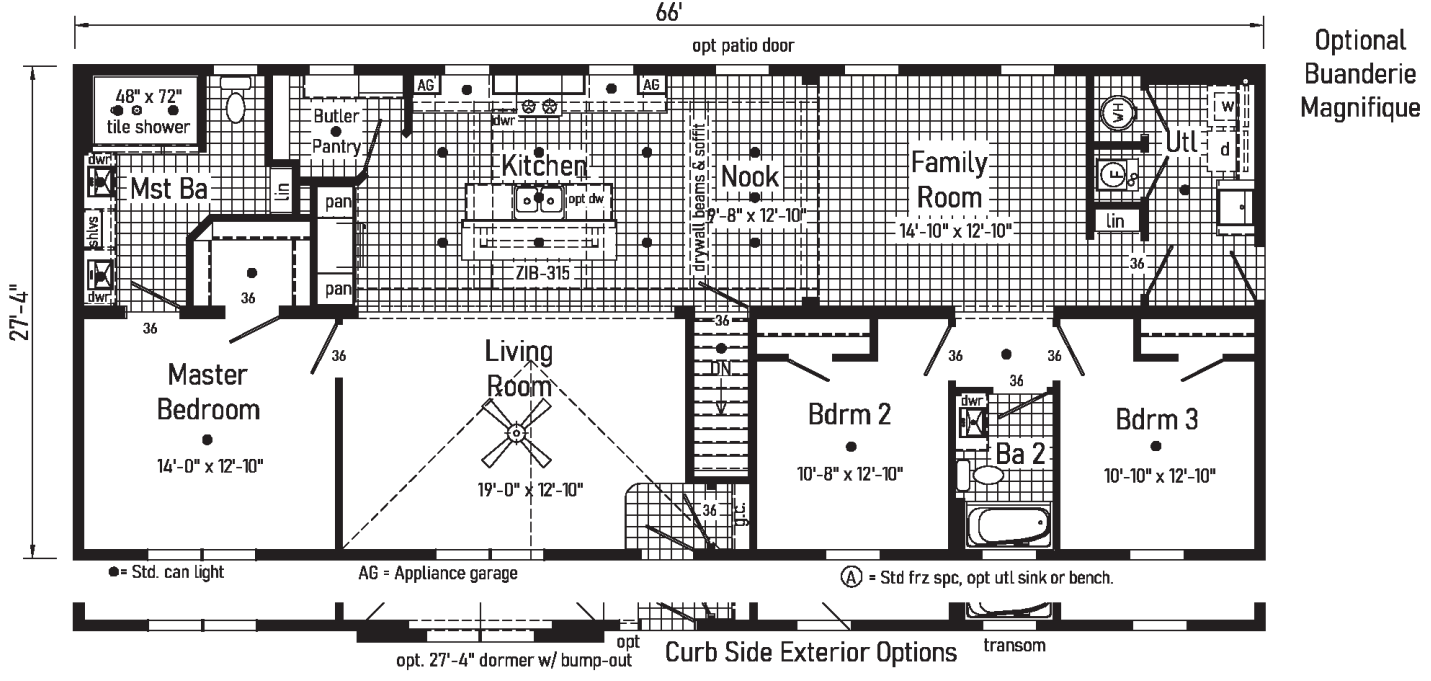
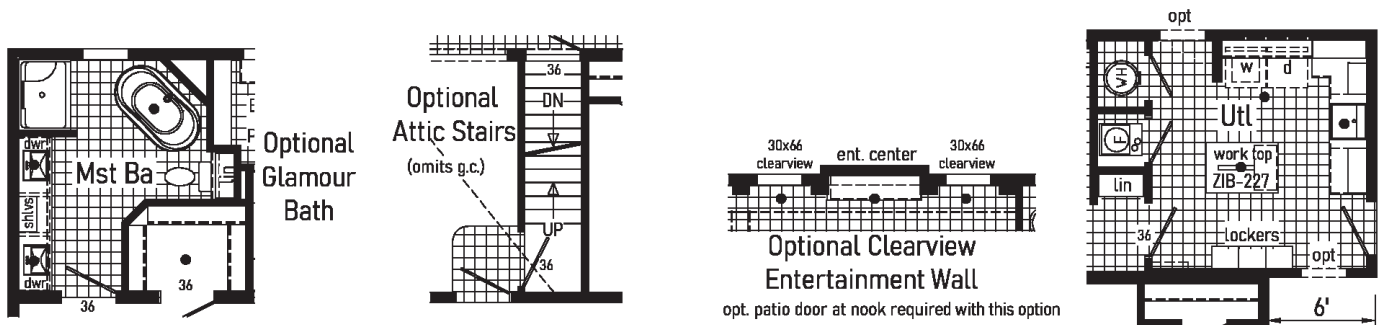
Scan to Watch Video!





Grand Magnifique

2P2602R
28x66 Approx. 1804 sq ft

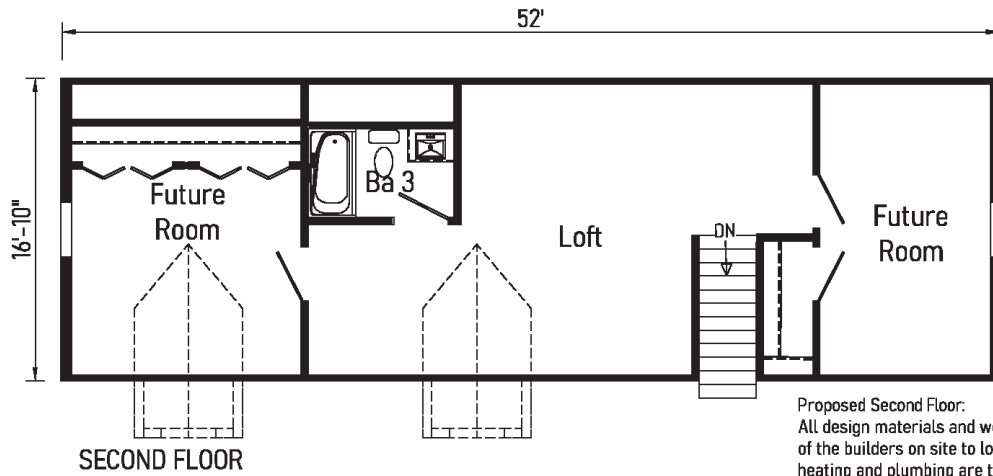


Optional
Baunderie
Magnifique

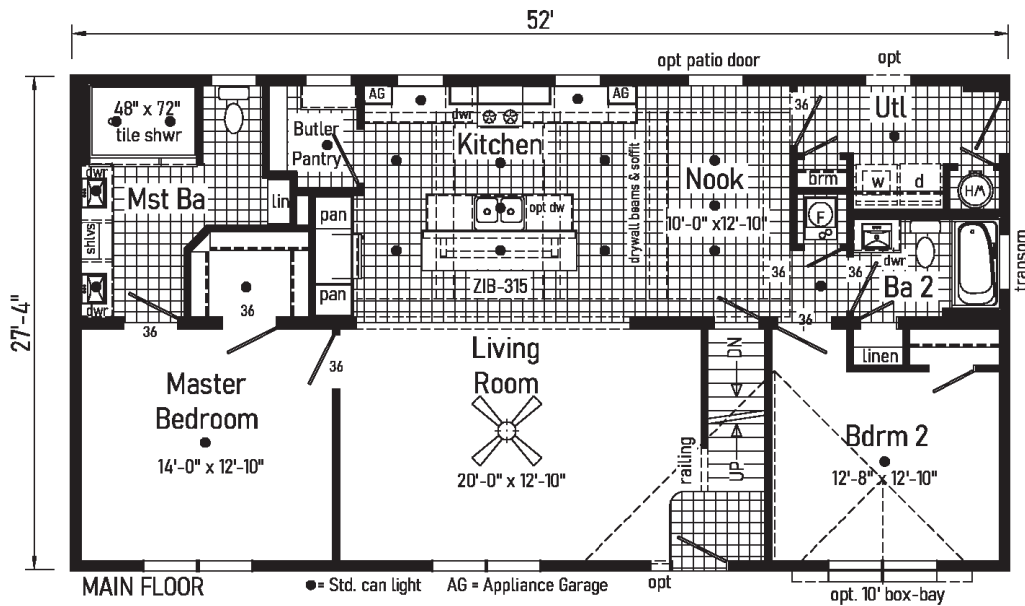
Deux

Magnifique

2PC2601R
28x52 Approx. 1421 sq ft



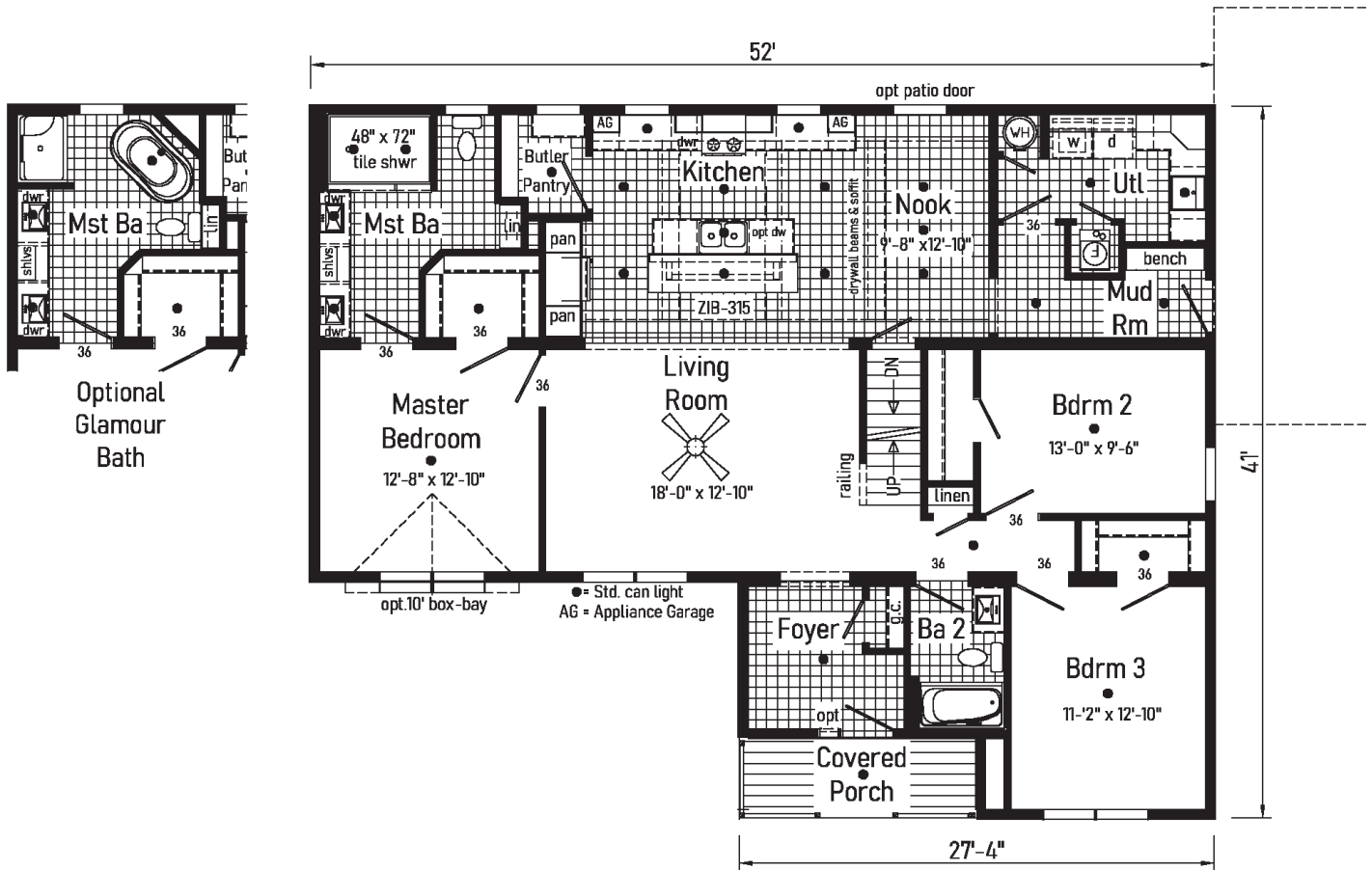
Proposed Second Floor:
 All design materials and work to be the responsibility of the builders on site to local codes. Light, vent, egress, heating and plumbing are the responsibility of the builder.



Trois

Magnifique

3P2601R
42x52 Approx. 1731 sq ft

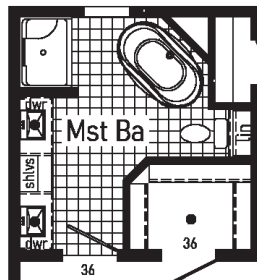




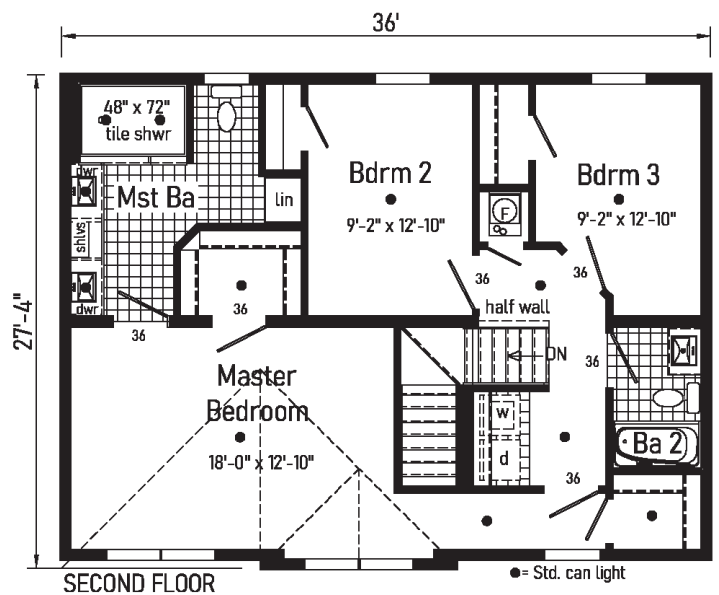
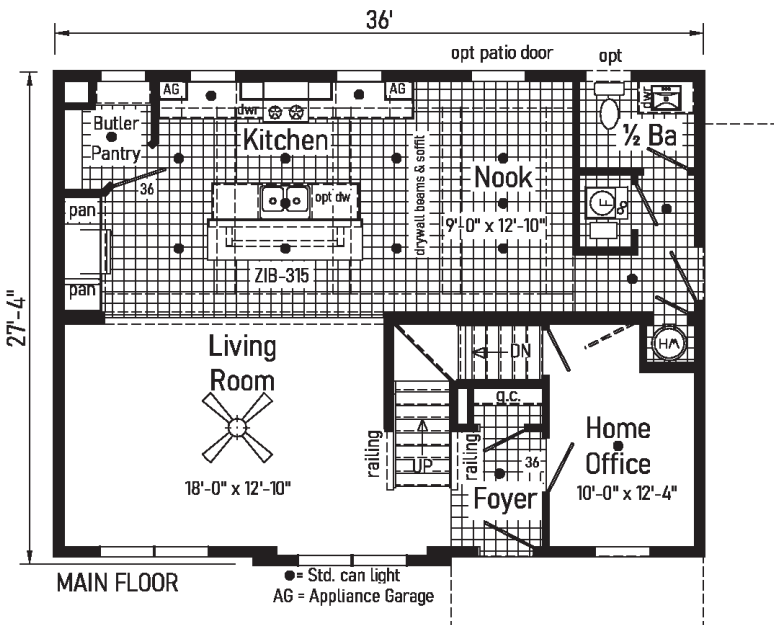
Quatre

Magnifique

6P2601R
28x36 Approx. 1943 sq ft



Optional Glamour Bath





inHouse
experience



2023

PENNWEST
reserve
R

Pennwest Homes
4 Pennwest Way Route 38
Emlenton, PA 16373
www.pennwesthomes.com

Magnifique

Connect with Us!



You Tube