

Ranch/Cape

2023



Table of Contents

RANCH

2M3001-N	Chester	832	Sq. Ft.	Pg. 4
2M3003-N	Herreshoff	1352	Sq. Ft.	Pg. 5
2M3004-N	Coghlán	1456	Sq. Ft.	Pg. 6
2M3006-N	Crookston	1664	Sq. Ft.	Pg. 7
2M3007-R	Saginaw	1203	Sq. Ft.	Pg. 8
2M3009-R	Scotsdale	1531	Sq. Ft.	Pg. 9
2M3010-R	Jasper	1585	Sq. Ft.	Pg. 10
2M3012-R	Heathcliff	1640	Sq. Ft.	Pg. 11
2M3013-R	Summerdale	1749	Sq. Ft.	Pg. 12
2M3014-R	Weatherby	1804	Sq. Ft.	Pg. 13
2M3018-X	Afton	1860	Sq. Ft.	Pg. 14
2M3020-X	Pemberton	1984	Sq. Ft.	Pg. 15
2M3021-X	Yorkshire	1664	Sq. Ft.	Pg. 16
2M3015-R	Wiltshire	1878	Sq. Ft.	Pg. 17
3M3001-R	Augustine	1649	Sq. Ft.	Pg. 18
3M3002-R	Canton	2146	Sq. Ft.	Pg. 19
4M3001-R	Leland	1943	Sq. Ft.	Pg. 20-21

CAPE

2MC3002-N	Woodcliff	1144	Sq. Ft.	Pg. 22
2MC3003-R	Kensington	1312	Sq. Ft.	Pg. 23
2MC3004-R	Covington	1531	Sq. Ft.	Pg. 24
3MC3001-R	Shadowbrook	1872	Sq. Ft.	Pg. 25
4MC3001-R	Pembroke	2312	Sq. Ft.	Pg. 26

BELLISSIMO

2M3401-R	Bellissimo	1559	Sq. Ft.	Pg. 28-29
2M2402-R	Bellissimo 2	1709	Sq. Ft.	Pg. 30
3M3401-R	Bellissimo 3	1736	Sq. Ft.	Pg. 31



French Country Oak
Mission Flat Panel



Barnwood Oak
Mission Flat Panel



Rustic Elm
Mission Flat Panel



White
Mission Flat Panel



Shadow Grey
Mission Flat Panel



Precision Cut and Dadoed Construction Fastened and Hot Glued - Ensures a Long Lasting and Square Cabinet Box

3/4 Overlaid Cabinet Doors & Drawer - Limited Exposure of Cabinet Stiles

3/4" Thick Shelving with Finished Edges - Prevents Warping of Shelves

Base and Wall Cabinet Adjustable Shelving - Fit Your Lifestyle

3/4" Face Frames - Durable and Securely Holds Fastners for Long Lasting Use

Pocket Screws - Ensure a Strong and Square Frame

Dove-Tail Constructed Drawers - Superior Drawer Strength

Undermount Soft Close Drawer Guides

Concealed and Recessed Hinges - Superior Door Strength

Recessed Toe Kick - Work at Counters with Ease

No Exposed Hanging Cleats- More Storage and Cleaner Look

KCMA Testing

- Overhead Cabinets Rated to 500 pound Capacity
- Drawers Opened 28,000 Times with Weight
- Cabinet Doors Opened 25,000 Times
- Extreme Testing of Cabinet Finish

Evermore Custom Cabinets endure a series of rigorous tests, measuring structural integrity Cabinet doors, drawers and even the finish are tested before earning the KCMA Cabinet Certification.

Visit www.KCMA.org for more information



Chester

4

2M3001-N 2632

Style: Ranch or Cape

Square Feet: 832

Bedrooms: 3

Bathrooms: 2

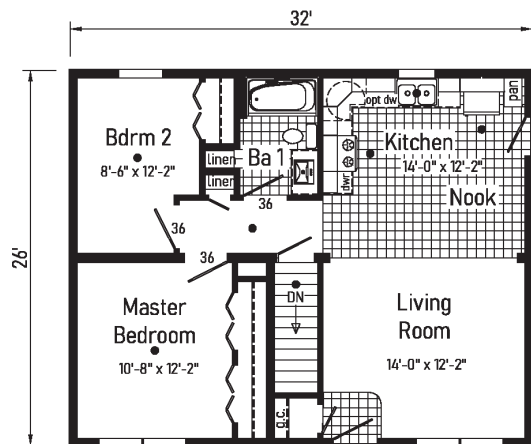
Optional Features:

- 12/12 Roof
- 6' Cape Dormers
- Shake Siding Accent
- Octagon Window
- Upgraded Front Door

Features On-Site

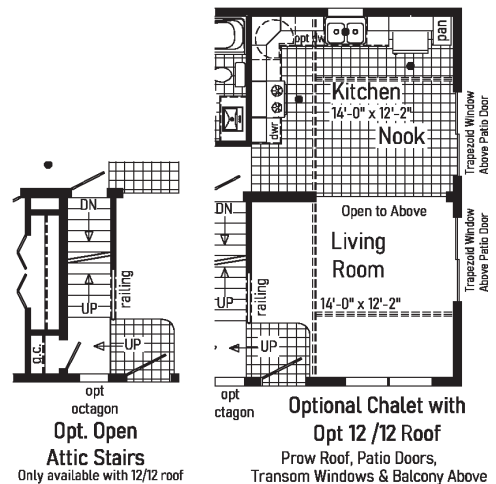
by Others:

- Garage



● = Std. can light

Note:
Transported on 1 carrier
Additional parts carrier required if
butterflied



Opt. Open
Attic Stairs

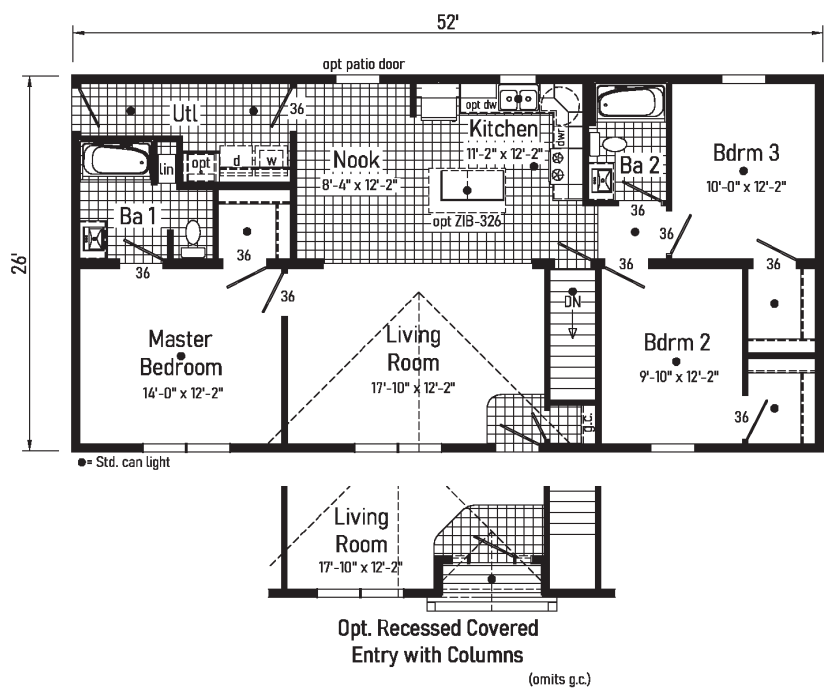
Only available with 12/12 roof

Optional Chalet with
Opt 12/12 Roof

Prow Roof, Patio Doors,
Transom Windows & Balcony Above



Herreshoff



2M3003-N 2652

Style: Ranch or Cape
 Square Feet: 1352
 Bedrooms: 3
 Bathrooms: 2

Optional Features:

- 27'-4" Dormer with Bumpout
- Dutch Eaves
- Full Eave Return
- Market Square Siding
- Shake Siding Accent
- Window Grids
- Upgraded Front Door
- Sidelite

Features On-Site

by Others:

- Stone Facade
- Garage
- Gutters and Downspouts



Coghlan

6

2M3004-N 2656

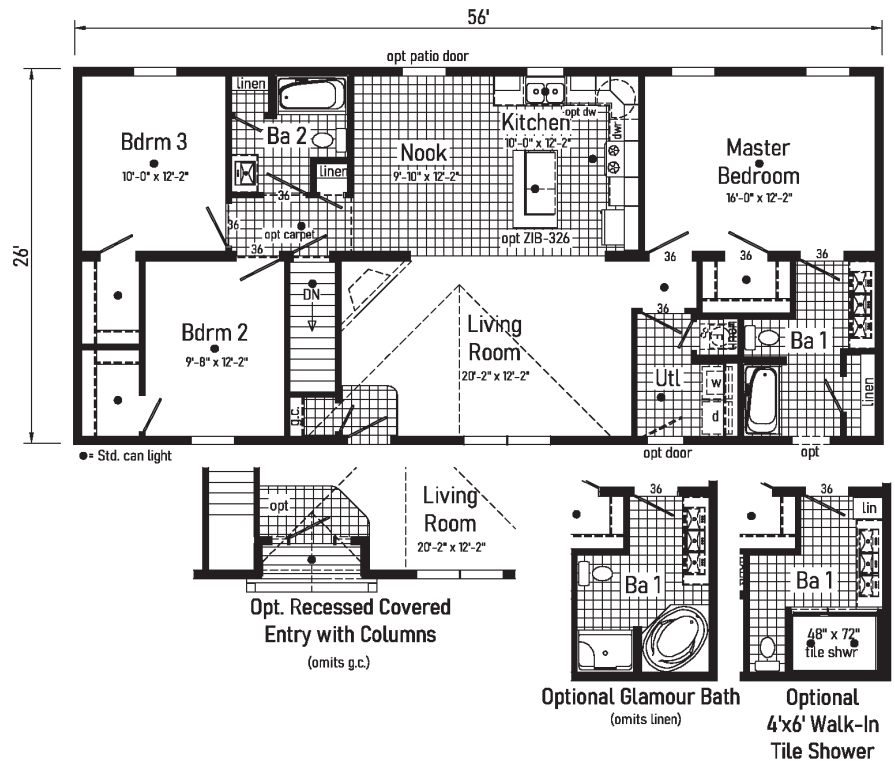
Style: Ranch or Cape
 Square Feet: 1456
 Bedrooms: 3
 Bathrooms: 2

Optional Features:

- 7/12 Roof
- Market Square Siding
- Window Lineals
- Window Grids
- Upgraded Front Door
- Kick Plate

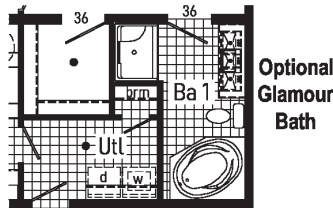
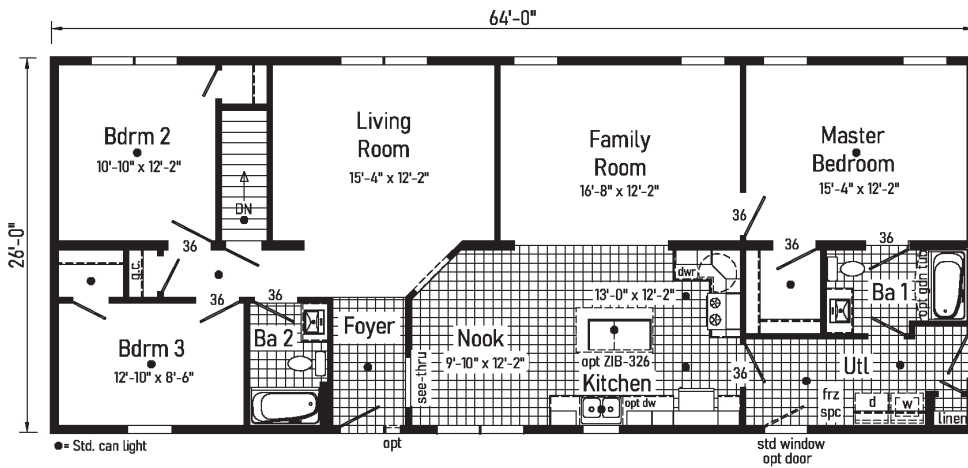
Features On-Site by Others:

- Stone Facade
- Garage
- Covered Porch





Crookston



2M3006-N 2664

Style: Ranch or Cape
 Square Feet: 1664
 Bedrooms: 3
 Bathrooms: 2

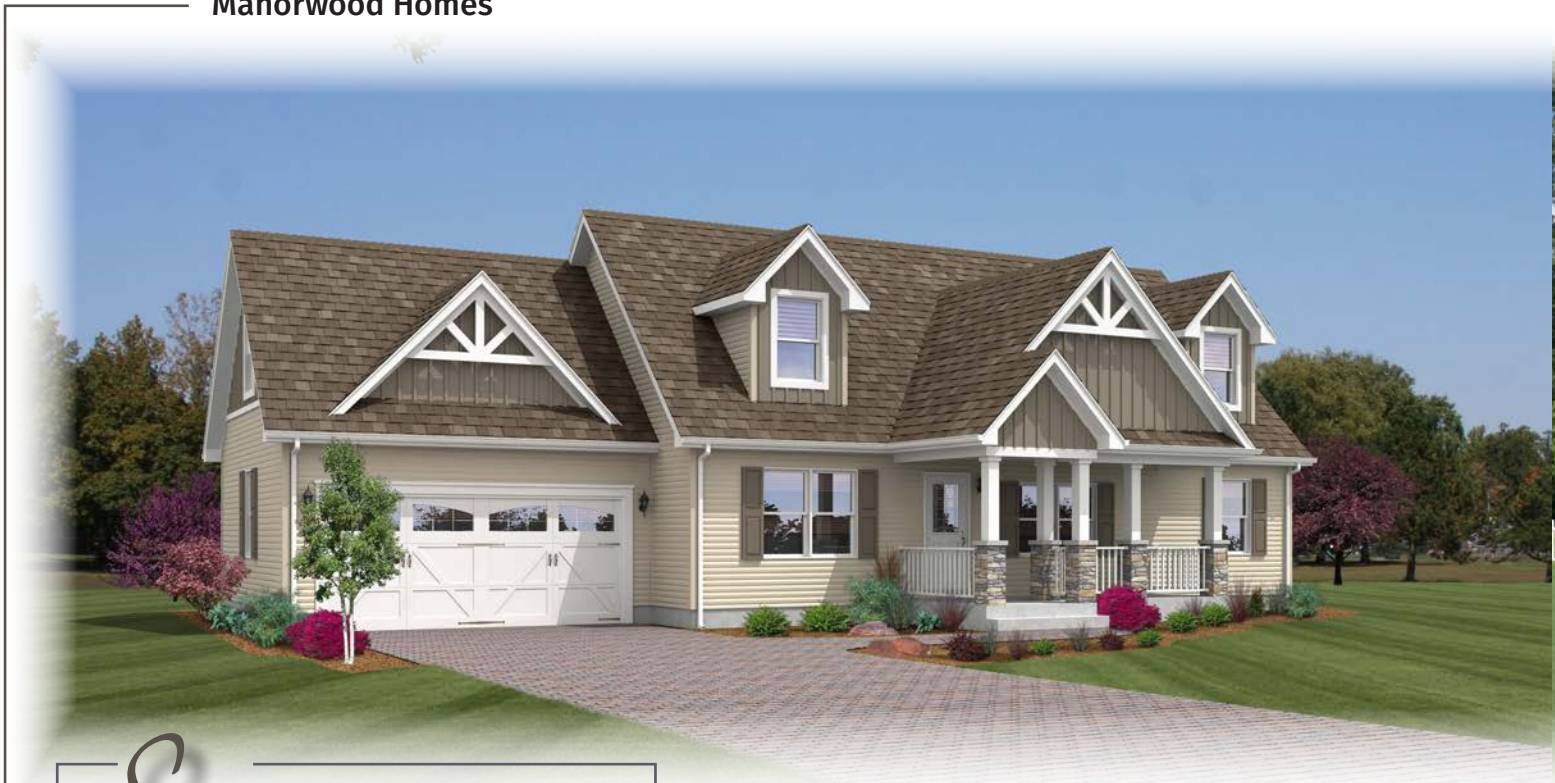
Optional Features:

- Clay Trim Package
- Window Grids
- Split Windows in Nook
- Upgraded Front Door

Features On-Site

by Others:

- Covered Porch
- Garage
- Gutters and Downspouts



Saginaw

8

2M3007-R 2844

Style: Ranch or Cape
 Square Feet: 1203
 Bedrooms: 3
 Bathrooms: 2

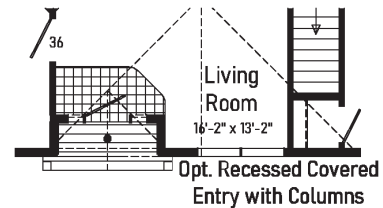
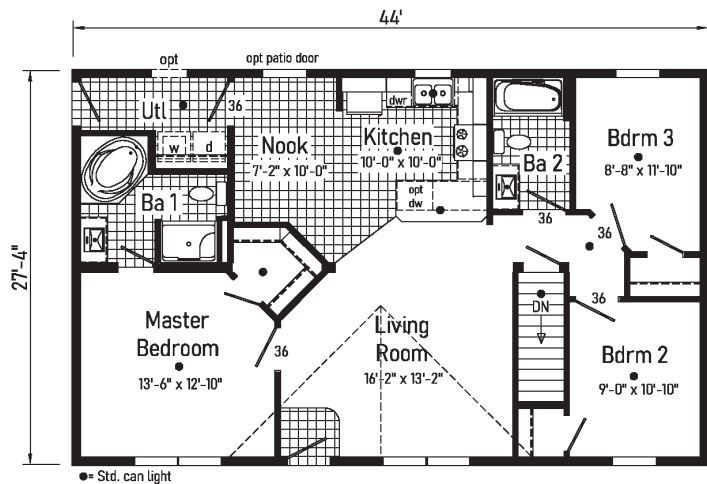
Optional Features:

- 12/12 Roof
- 6' Cape Dormers
- Vertical Siding
- Lineals
- Upgraded Front Door

Features On-Site

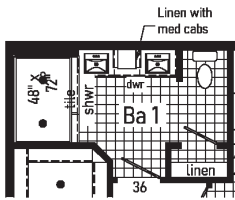
by Others:

- Garage
- Covered Porch
- Gutters and Downspout

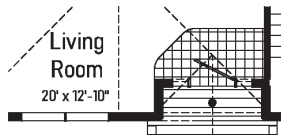




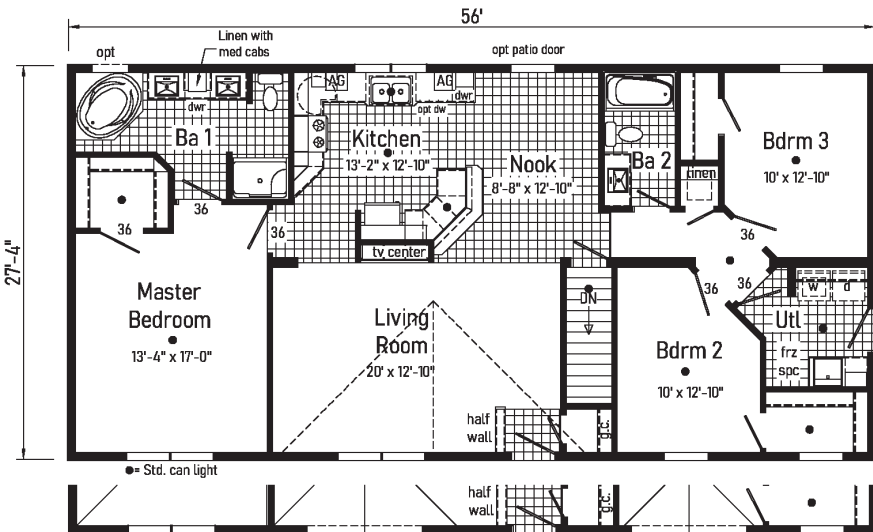
Scotsdale



**Optional
4'x6' Walk-In
Tile Shower**



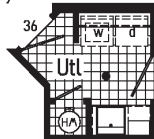
**Opt. Recessed Covered
Entry with Columns**



Opt. 27'-4" Dormer w/Bump-Out

Curb Side Exterior Options

Opt. Box-Bay



Opt. Water Heater
(omits frz spc)

2M3009-R 2856

Style: Ranch or Cape
 Square Feet: 1531
 Bedrooms: 3
 Bathrooms: 2

Optional Features:

- 7/12 Roof
- 27'-4" Dormer with Bumpout
- Dutch Eaves
- Gable Deco
- Box Bay 42
- Vertical Siding
- Shake Siding Accent
- Window Lineals
- Window Grids
- Upgraded Front Door



Jasper

10

2M3010-R 2858

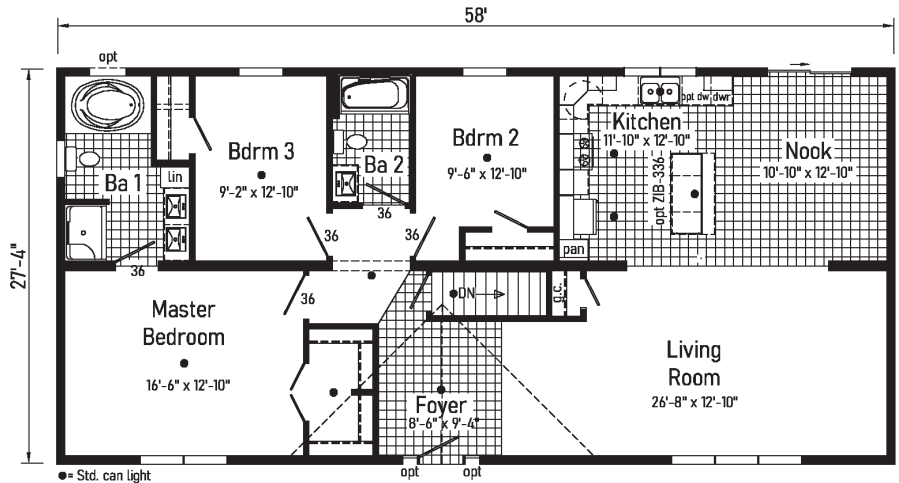
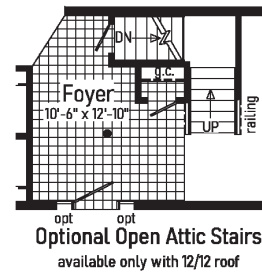
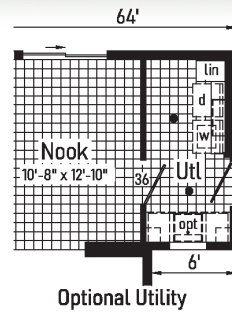
Style: Ranch or Cape
 Square Feet: 1585
 Bedrooms: 3
 Bathrooms: 2

Optional Features:

- 27-4" Dormer with Bumpout
- 6' Cape Dormers with Small Windows
- Dutch Eaves
- Full Eave Return
- Recessed Entry
- Utility Room
- Shake Siding Accent
- Clay Trim Package
- Window Grids
- Upgraded Front Door
- 2 Front Door Lights
- Sidelites

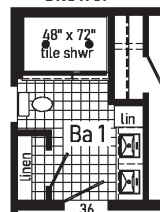
Features On-Site by Others:

- Stone Facade

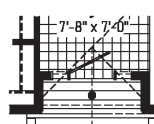


● = Std. can light

Optional 4'x6' Walk-In Tile Shower



Optional Recessed Entry



opt 27'-4" dormer w/ bump-out

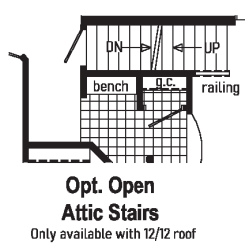
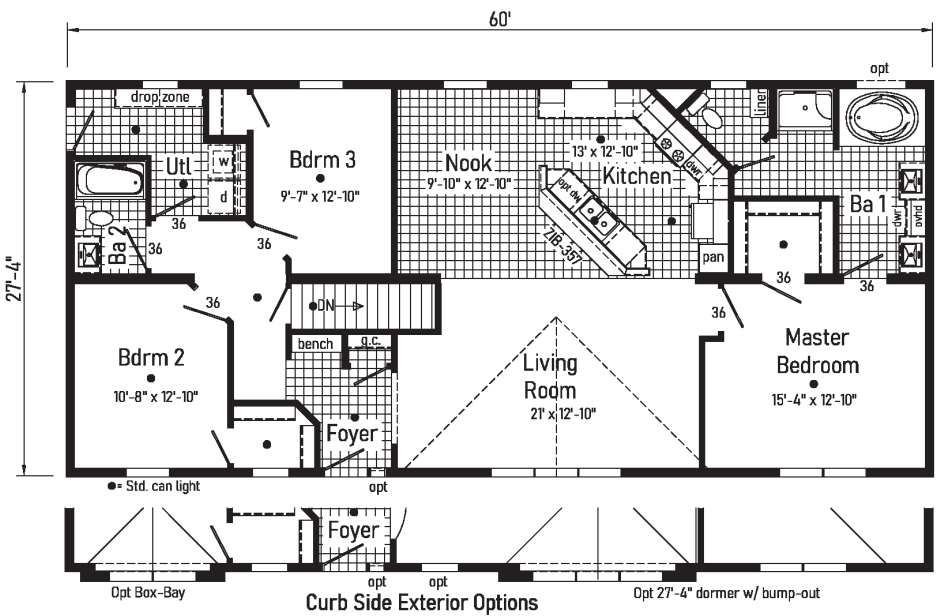
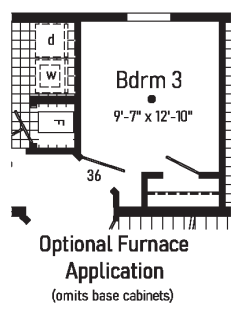
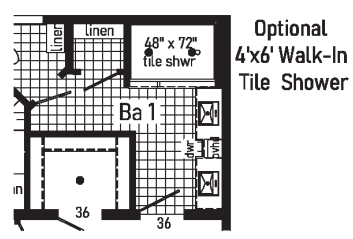
Curb Side Exterior Options
 Living Room
 27'-8" x 12'-10"

Opt. Recessed Covered Entry with Columns





Heathcliff



2M3012-R 2860

Style: Ranch or Cape
 Square Feet: 1640
 Bedrooms: 3
 Bathrooms: 2

Optional Features:

- 12/12 Roof
- 8' Cape Dormer
- 27'-4" Dormer with Bumpout
- Dutch Eaves
- Full Eave Return
- Box Bay 42
- Vertical Siding
- Window Grids
- Upgraded Front Door
- 2 Front Door Lights
- Sidelite

Features On-Site by Others:

- Stone Facade



Summerdale

12

2M3013-R 2864

Style: Ranch or Cape

Square Feet: 1749

Bedrooms: 3

Bathrooms: 2

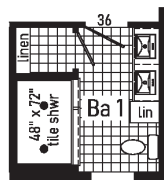
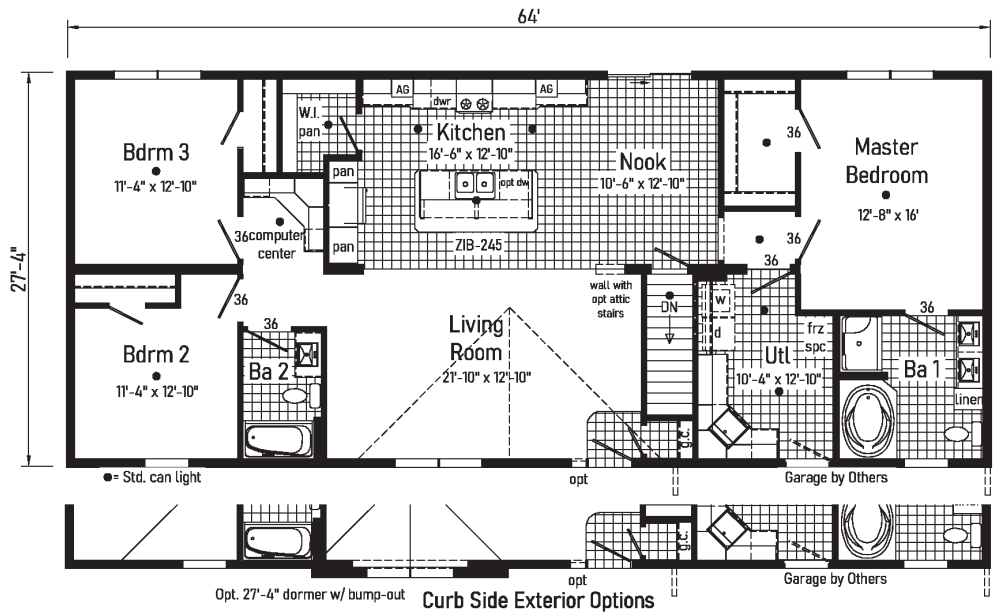
Optional Features:

- 27'-4" Dormer with Bumpout
- Dutch Eaves
- Full Eave Return
- Vertical Siding
- Clay Trim Package
- Outside Corner Trim
- Gable Deco
- Window Grids
- Upgraded Front Door
- 2 Front Door Lights
- Sidelite

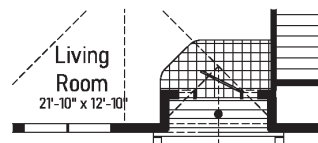
Features On-Site

by Others:

- Garage



Optional
4'x6' Walk-In
Tile Shower

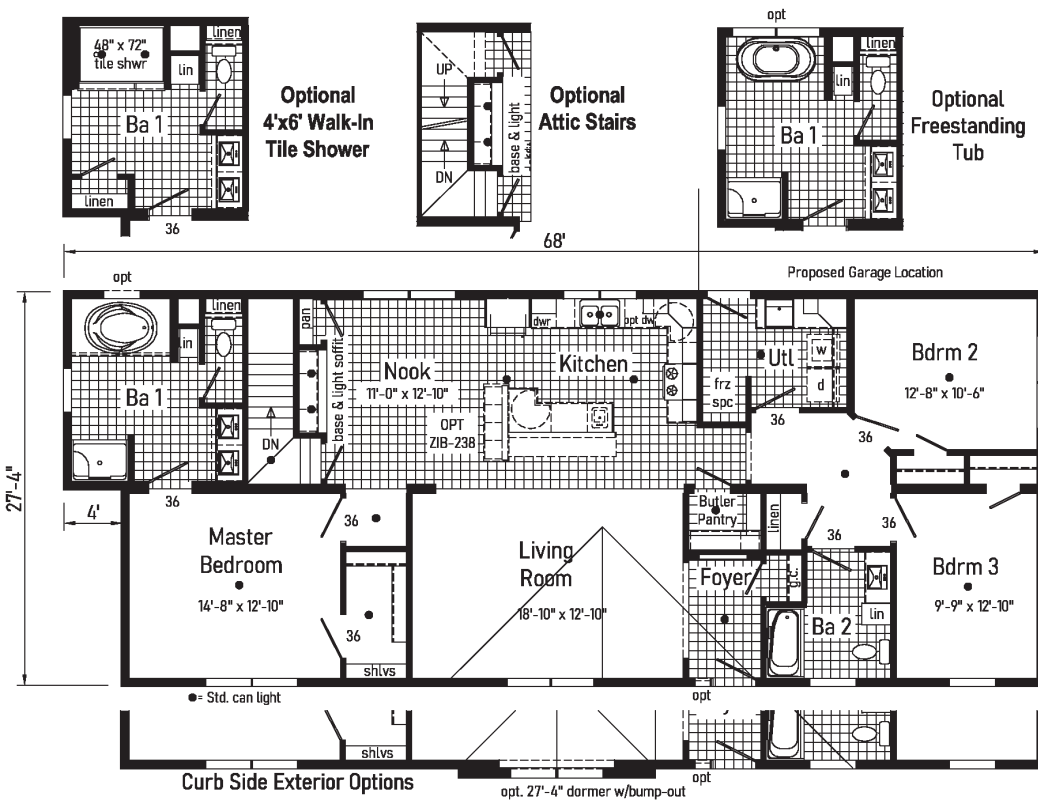


Opt. Recessed Covered
Entry with Columns
(omits g.c.)

Opt. 27'-4" dormer w/ bump-out Curb Side Exterior Options



Weatherby



2M3014-R 2868/64

Style: Ranch or Cape
 Square Feet: 1804
 Bedrooms: 3
 Bathrooms: 2

Optional Features:

- 12/12 Roof
- 6' Cape Dormers
- 27'-4" Dormer with Bump-out
- Dutch Eaves
- Full Eave Return
- Vertical Siding
- Shake Siding Accent
- Window Lineals
- Window Grids
- Upgraded Front Door
- Sidelite



Afton

14

2M3018-X 3260

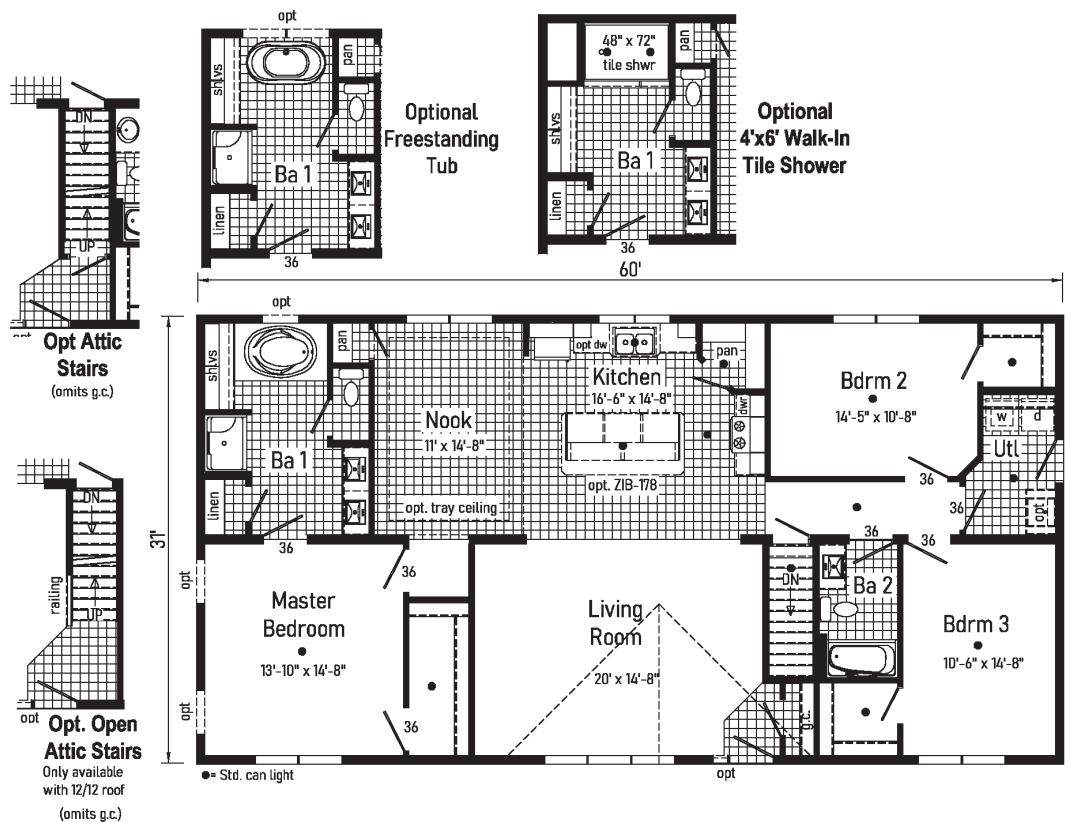
Style: Ranch or Cape
 Square Feet: 1860
 Bedrooms: 3
 Bathrooms: 2

Optional Features:

- 7/12 Roof
- Vertical Siding
- Window Grids
- Upgraded Front Door
- Sidelite

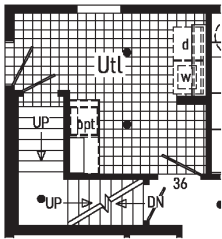
Features On-Site by Others:

- Covered Porch
- Gutters and Downspouts

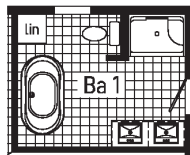




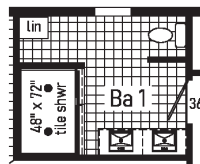
Pemberton



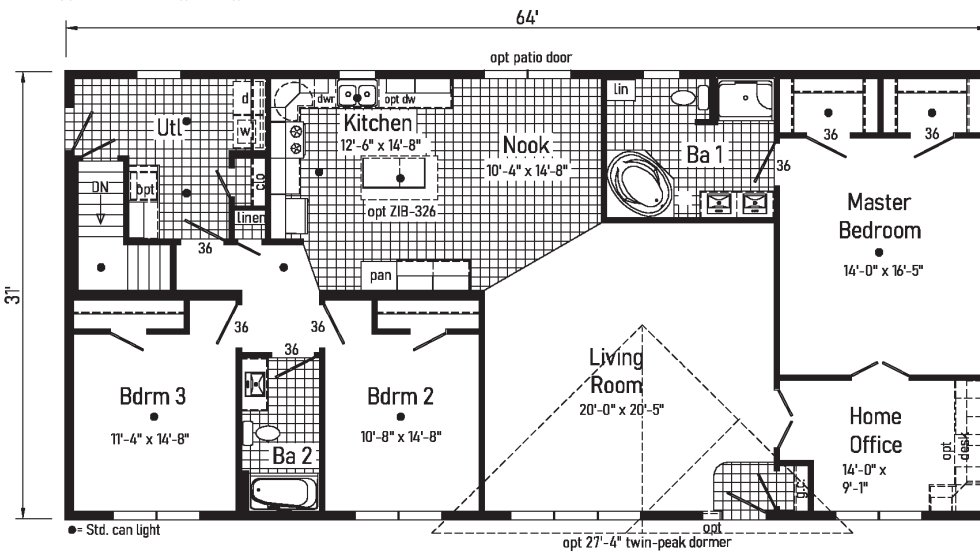
Opt Attic Stairs
(omits Linen & Ctb)



Optional Freestanding Tub



Optional 4'x6' Walk-In Tile Shower



2M3020-X 3264

Style: Ranch or Cape
 Square Feet: 1984
 Bedrooms: 3
 Bathrooms: 2
 Home Office

Optional Features:

- 7/12 Roof
- Box Bay 42
- Market Square Siding
- Shake Siding Accent
- Outside Corner Trim
- Window Grids
- Window Lineals
- Upgraded Front Door
- 2 Front Door Lights
- Sidelite

Features On-Site

by Others:

- Covered Porch
- Gable Deco



Yorkshire

16

2M3021-X 3268

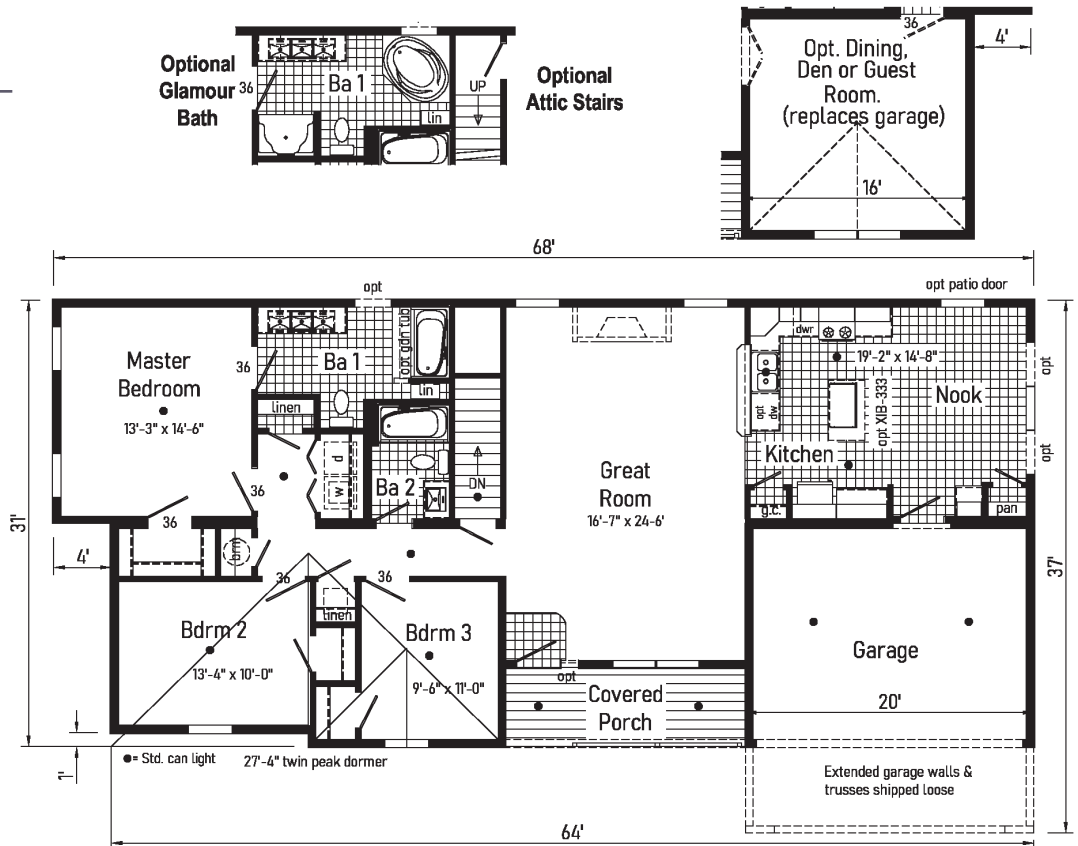
Style: Ranch or Cape
 Square Feet: 1664
 Bedrooms: 3
 Bathrooms: 2

Optional Features:

- Dutch Eaves
- Full Eave Return
- Gable Deco
- Shake Accent Siding
- Window Grids
- Upgraded Front Door
- Sidelite

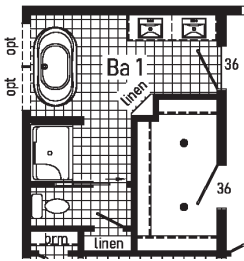
Features On-Site by Others:

- Stone Facade
- Extended Garage
- Gutters and Downspouts

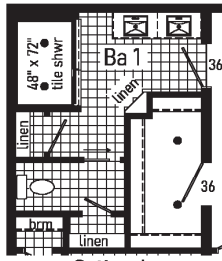




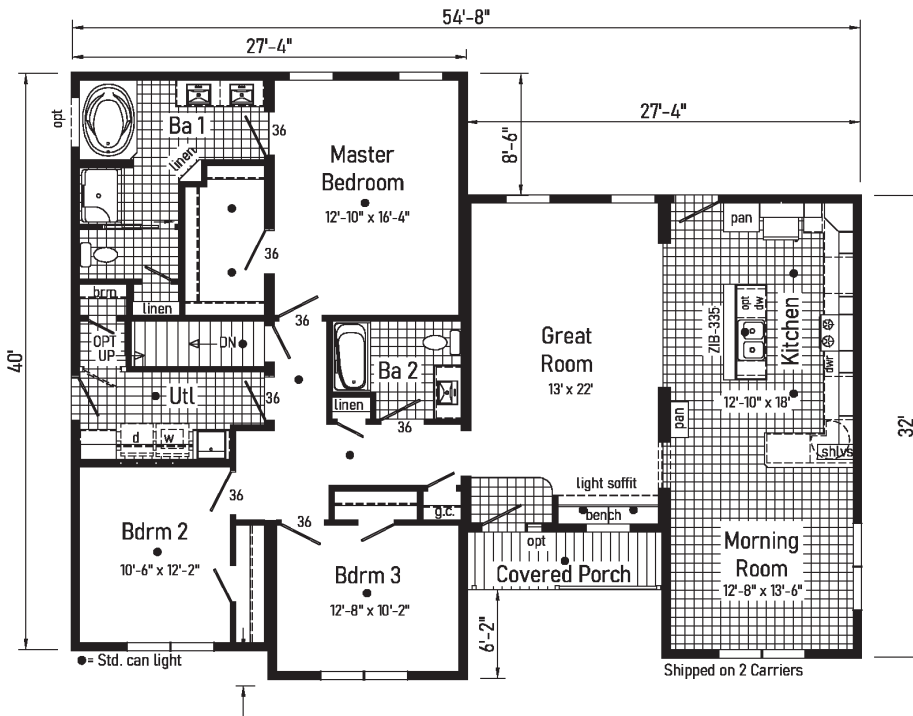
Wiltshire



Optional Freestanding Tub



Optional 4'x6' Walk-In Tile Shower



2M3015-R 4254/8

Style: Ranch or Cape
 Square Feet: 1878
 Bedrooms: 3
 Bathrooms: 2

Optional Features:

- 12/12 Roof
- 6' Hipped Cape Dormer
- Window in Gable End
- Dutch Eaves
- Full Eave Return
- Clay Trim Package
- Window Grids
- Window Lineals
- Upgraded Front Door
- Sidelite

Features On-Site

by Others:

- Stone Facade
- Gable Deco



Augustine



Scan to Watch Video!

18

3M3001-R 4150/44

Style: Ranch or Cape
 Square Feet: 1649
 Bedrooms: 3
 Bathrooms: 2

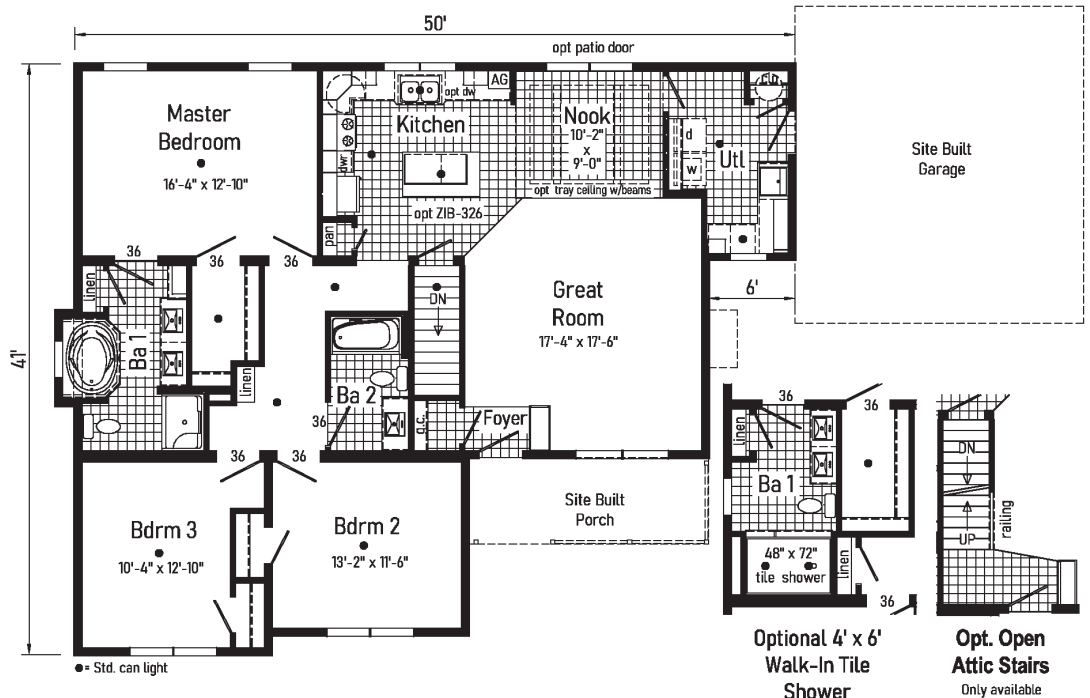
Optional Features:

- 9/12 Roof Pitch
- 8' Dormer with Two Windows & Full Return
- Shake Siding
- Vertical Siding
- Full Return
- Dutch Eaves
- Upgraded Front Door
- Lineals
- Gable Window
- Window Grids

Features On-Site

by Others:

- Porch
- Garage

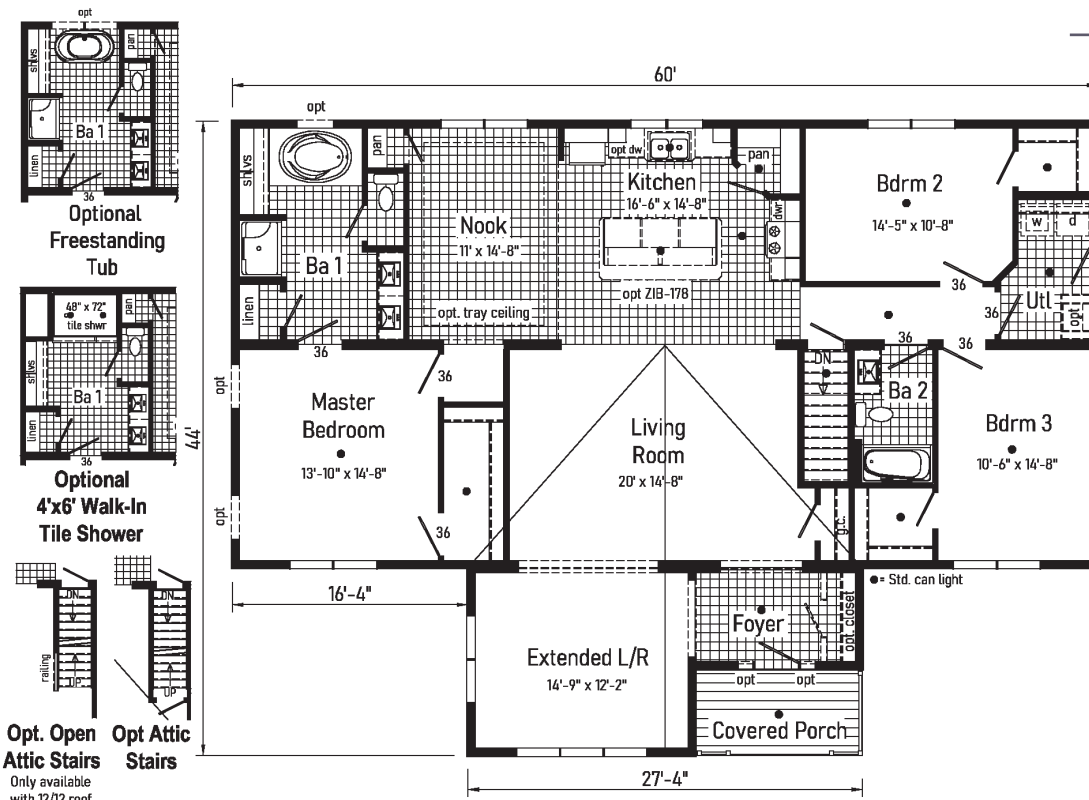


Optional 4' x 6'
 Walk-In Tile
 Shower

Opt. Open
 Attic Stairs
 Only available
 with 12/12 roof



Canton



3M3002-X 4460

Style: Ranch or Cape
 Square Feet: 2146
 Bedrooms: 3
 Bathrooms: 2

Optional Features:

- 12/12 Roof
- 6' Hipped Cape Dormers
- Market Square Siding
- Vertical Siding
- Shake Siding Accent
- Clay Trim Package
- Outside Corner Trim
- Window at Gable End
- Window Grids
- Window Lineals
- Windows at Entry
- Upgraded Front Door

Features On-Site by Others:

- Gutters and Downspouts



Leland

20

4M3001-R 4164/60

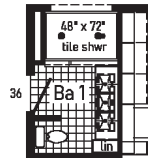
Style: Ranch or Cape
 Square Feet: 1943
 Bedrooms: 3
 Bathrooms: 2

Optional Features:

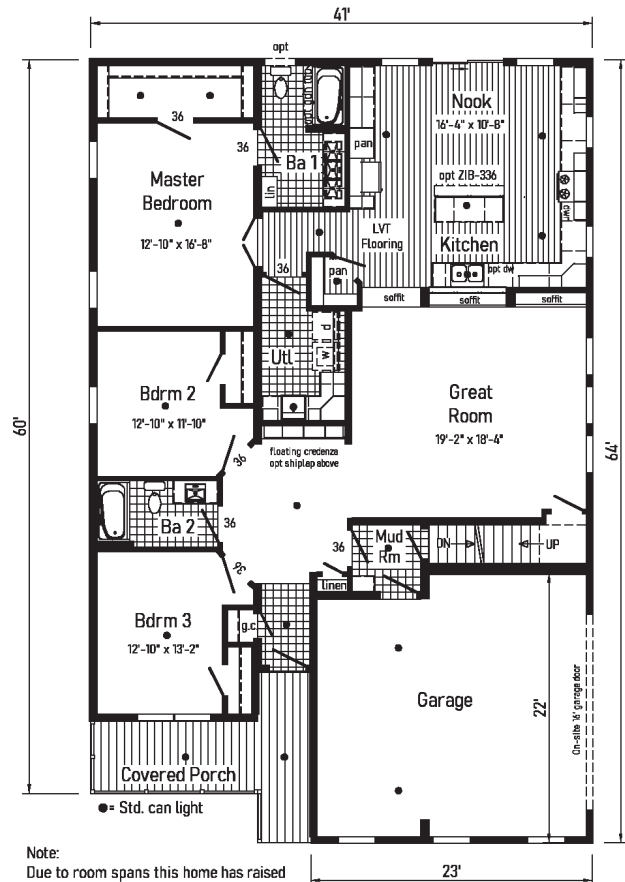
- Window at Gable End
- Shake Siding Accent
- Window Grids
- Window Lineals
- Upgraded Front Door

Features On-Site

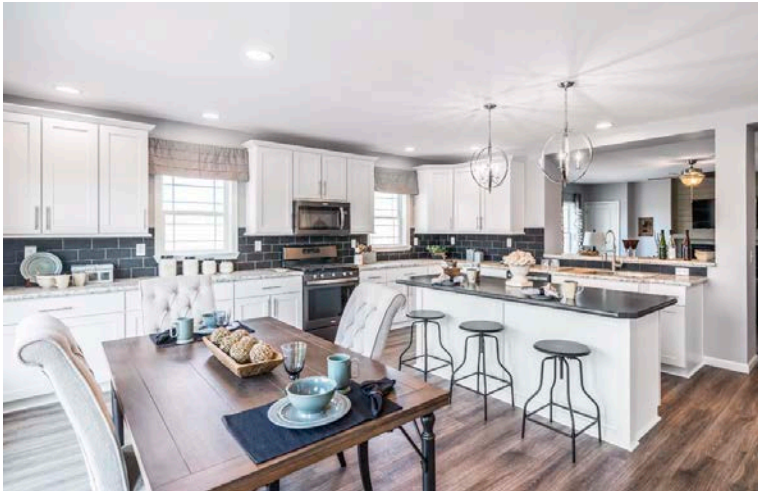
- by Others:**
- Gutters & Downspouts



**Optional
 4'x6' Walk-In
 Tile Shower**



Note:
 Due to room spans this home has raised beams in attic. To reduce beam height plan must be altered and room spans reduced.



LeLand



Scan to Watch Video!





Woodcliff

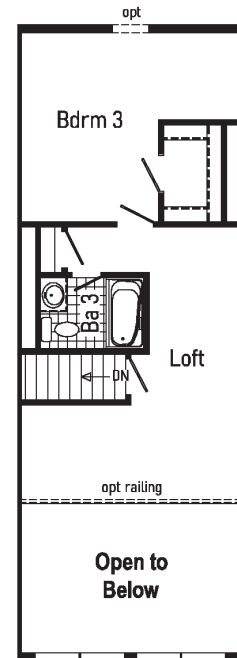
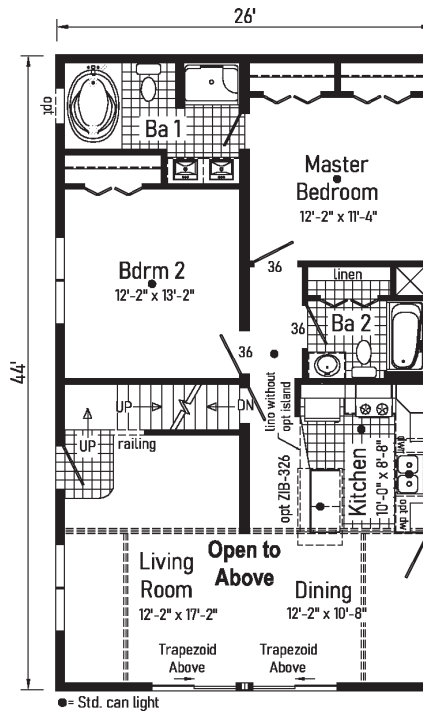
22

2MC3002-N 2644

Style: Cape
 Square Feet: 1144 + 518
 Bedrooms: 3
 Bathrooms: 3

Optional Features:

- Market Square Siding
- Clay Trim Package
- Trapezoid Windows
- Window Grids
- Upgraded Front Door
- Composite Decking

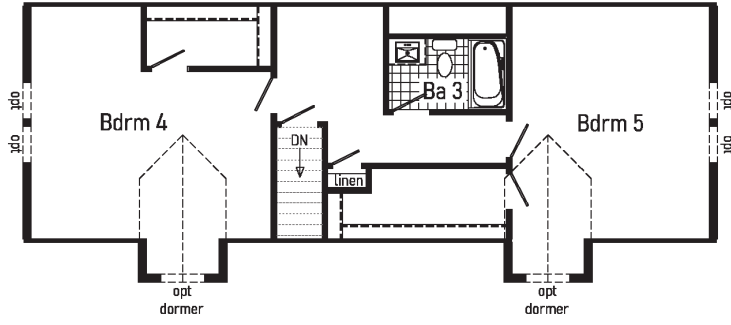


Second Floor by Others

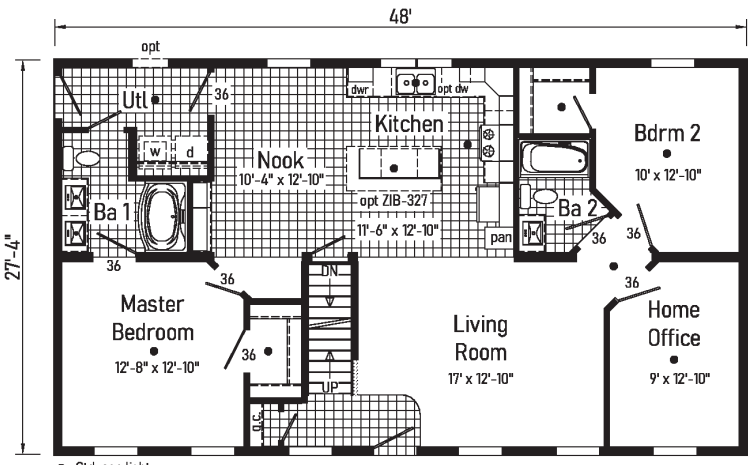
Proposed Second Floor:
 All design materials and work to be the responsibility of the builders on site to local codes. Light, vent, egress, heating and plumbing are the responsibility of the builder.



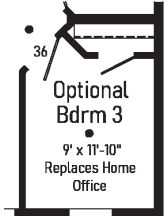
Kensington



Proposed Second Floor:
All design materials and work to be the responsibility of the builders on site to local codes. Light, vent, egress, heating and plumbing are the responsibility of the builder.



● = Std. can light



2MC3003-R 2848

Style: Cape
Square Feet: 1312 + 830
Bedrooms: 5
Bathrooms: 3
Home Office

Optional Features:

- 6' Cape Dormers
- Shake Siding Accent
- Window Lineals
- Window Grids
- Upgraded Front Door

Features On-Site by Others:

- Covered Porch
- Gutters and Downspouts



Covington

24

2MC3004-R 2856

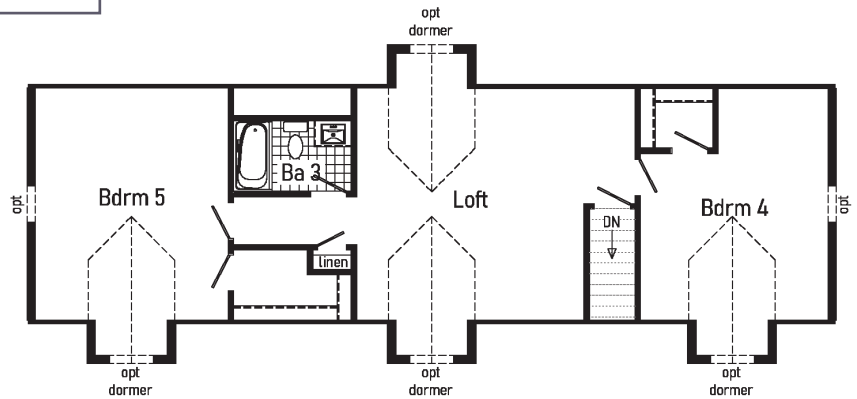
Style: Cape
 Square Feet: 1531 + 930
 Bedrooms: 5
 Bathrooms: 3

Optional Features:

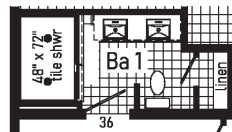
- 6' Cape Dormers
- Window Grids
- Market Square Siding
- Shake Siding Accent
- Window in Gable End
- Upgraded Front Door

Features On-Site

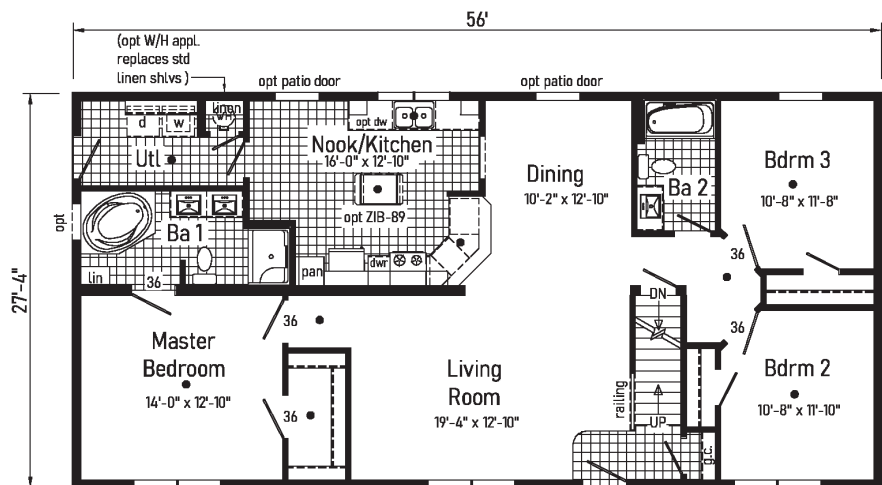
- by Others:
- Covered Porch



Proposed Second Floor:
 All design materials and work to be the responsibility of the builders on site to local codes. Light, vent, egress, heating and plumbing are the responsibility of the builder.



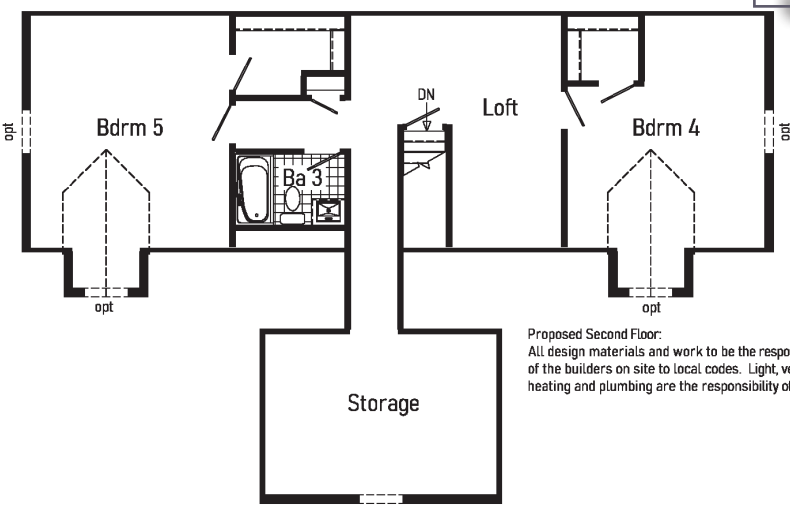
Optional
 4'x6' Walk-In
 Tile Shower



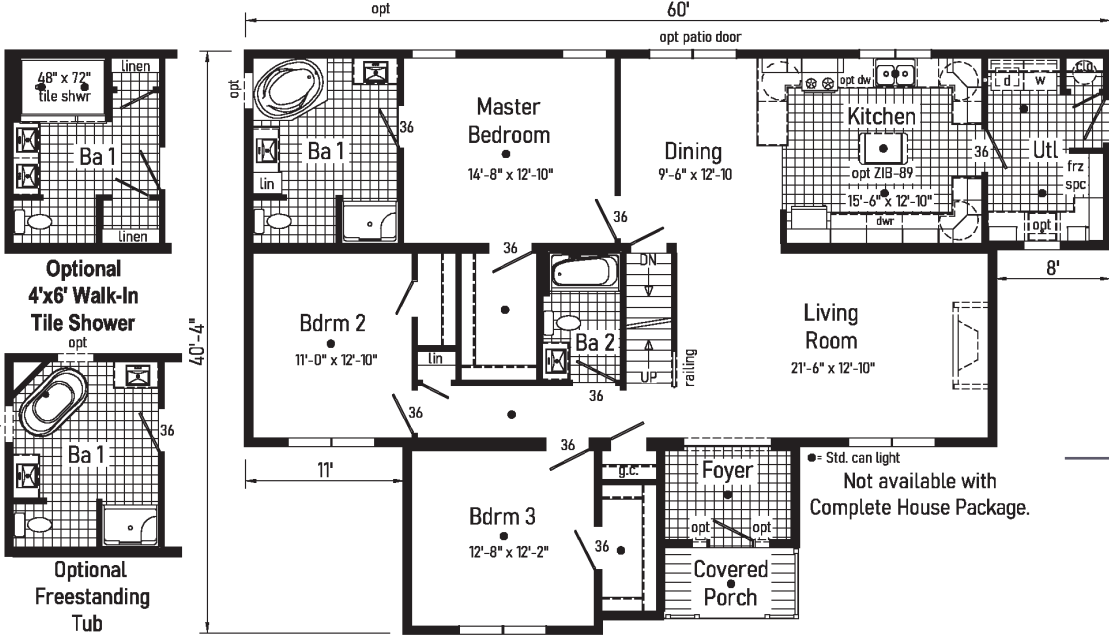
• = Std. can light



Shadowbrook



Proposed Second Floor:
All design materials and work to be the responsibility of the builders on site to local codes. Light, vent, egress, heating and plumbing are the responsibility of the builder.



3MC3001-R 4160/52

Style: Cape
Square Feet: 1872 + 1085
Bedrooms: 5
Bathrooms: 3

Optional Features:

- 6' Cape Dormer
- Dutch Eaves
- Full Eave Return
- Window Grids
- Upgraded Front Door
- 2 Lights at Front Door
- Sidelites

Features On-Site by Others:

- Gable & Window Deco
- Brick Facade

● = Std. can light
Not available with Complete House Package.



Pembroke

26

4MC3001-R 6464

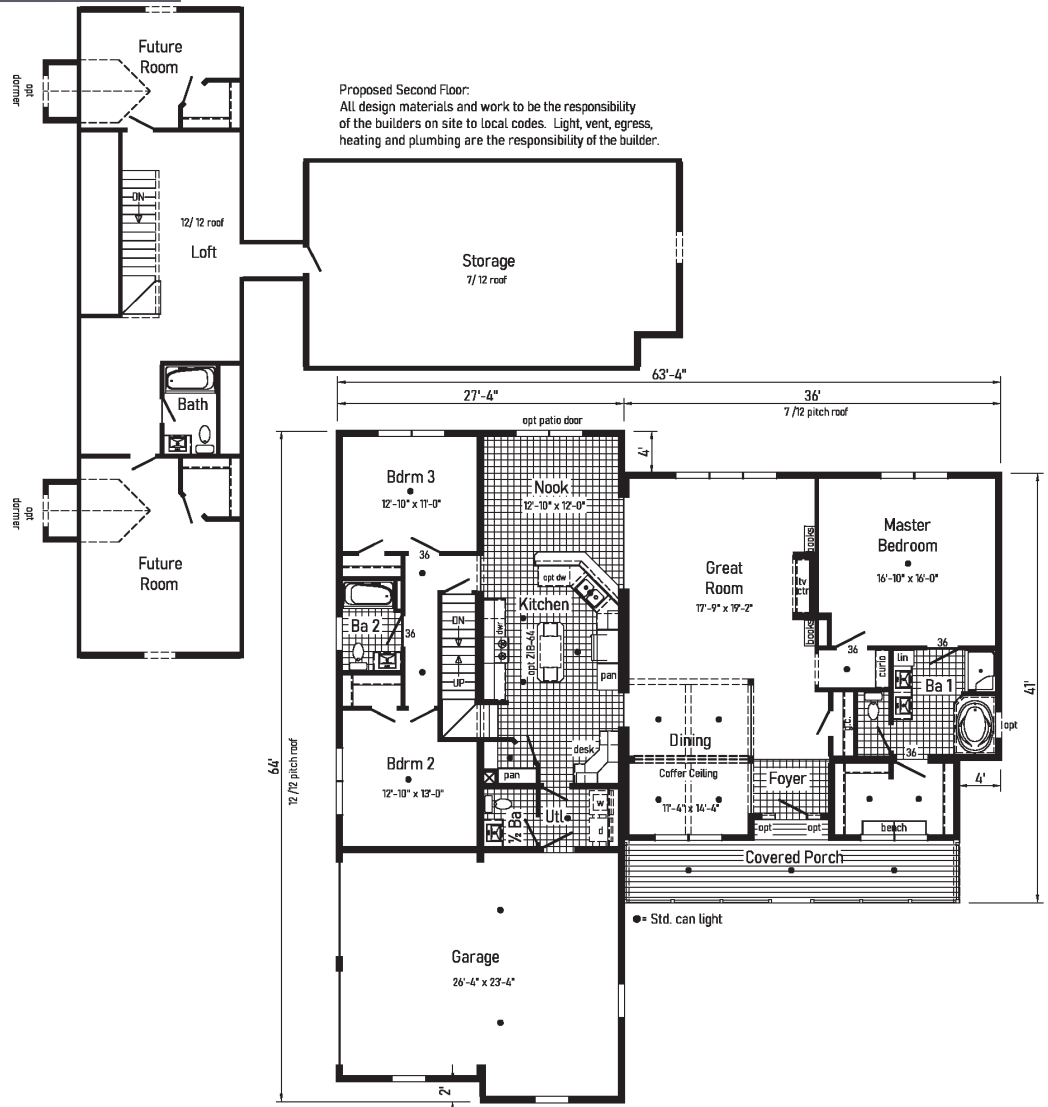
Style: Cape
 Square Feet: 2312 + 1717
 Bedrooms: 5
 Bathrooms: 3

Optional Features:

- Dutch Eaves
- Full Eave Return
- Dormer at Porch
- Gable Window above Garage and Bath 1 Tub
- Market Square Siding
- Window Grids
- Upgraded Front Door
- Sidelites

Features On-Site

- by Others:**
- Brick On-Site





inHouse experience

 Kitchen



 Save  Print  Share

- Cabinets
Flat Panel Mission White - 42
- Ceramic Backsplash Single Row
None
- Ceramic Backsplash Full
None
- Island Cabinets
White
- Counter Tops
Spring Carnival
- Island Counter Tops
None
- Flooring
Orion Blanco 12x24 Plank
- Appliances
Stainless Steel
- Windows
Window Without Grids
- Hardware
Brushed Nickel Pull
- Sinks
Stainless Steel
- Ceiling Cove & Trim Moulding
Coveless w/ White

Our inHouse Experience lets you customize the decor selections for a Kitchen and also for both a Ranch & Two Story Exterior. All color choices are available to help you decide on your design style and create your dream home!

Visit our website today to give it a try! Share your creations with the social world, or print it out!





Bellissimo

28

2M3401-R 2858

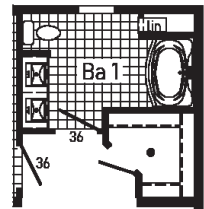
Style: Ranch or Cape
 Square Feet: 1559
 Bedrooms: 3
 Bathrooms: 2

Optional Features:

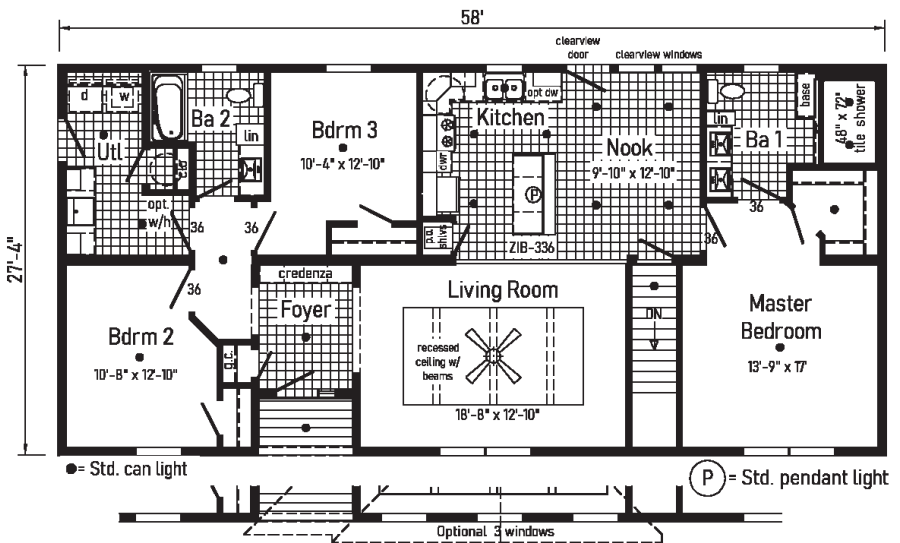
- 7/12 Roof
- 27'-4" Twin Peak Dormer with Full and Extended Eave
- Dutch Eaves
- Vertical Siding
- Shake Siding Accent
- Window Lineals
- Kick Plate
- Additional Windows

Features On-Site by Others:

- Garage
- Gutters & Downspouts



Alternate Garden Tub Bath



Optional attic stairwell not available. Opt. 27'-4" twin-peak dormer w/ extended eave



Bellissimo



Scan to Watch Video!





Bellissimo 2

30

2M3402-R 2864

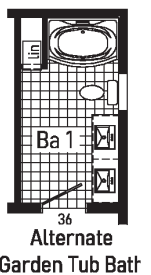
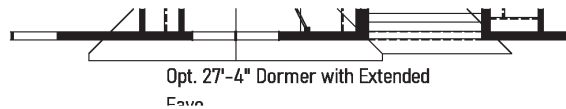
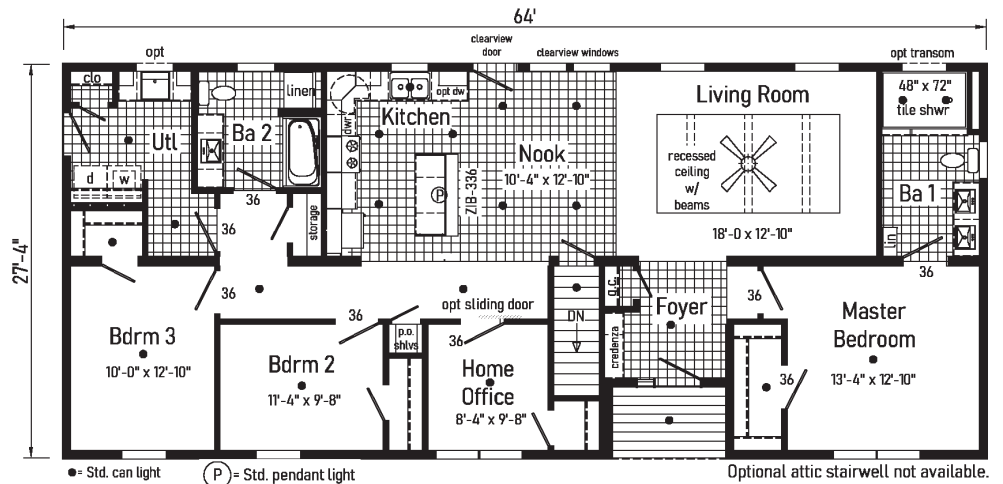
Style: Ranch or Cape
 Square Feet: 1709
 Bedrooms: 3
 Bathrooms: 2
 Home Office

Optional Features:

- 7/12 Roof
- 27'-4" Twin Peak Dormer with Full and Extended Eaves
- Vertical Siding
- Shake Siding Accent
- Upgraded Front Door

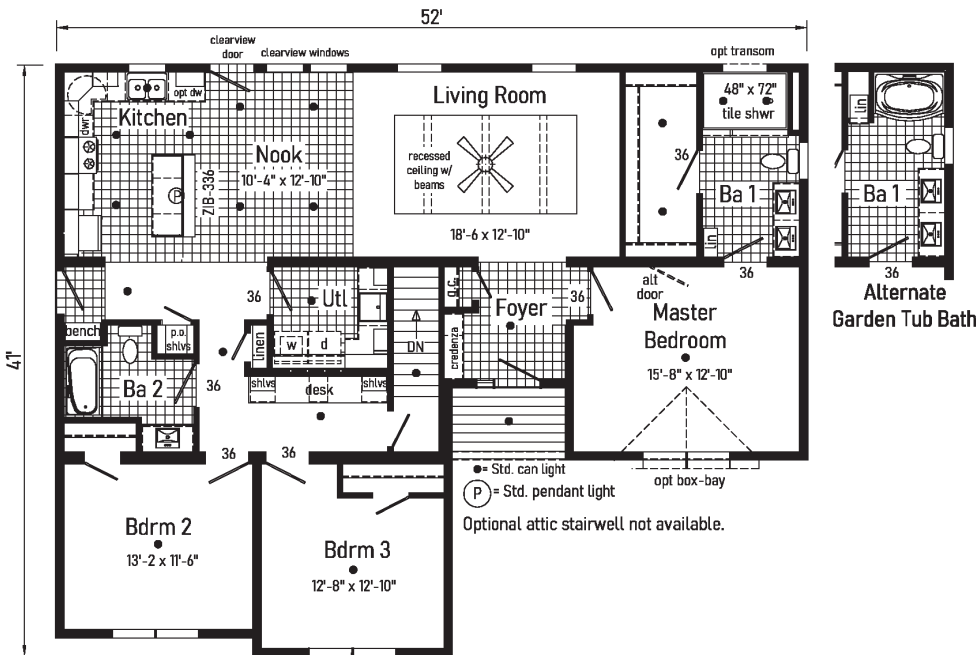
Features On-Site by Others:

- Garage
- Gutters & Downspouts





Bellissimo 3



3M3401-R 4152

Style: Ranch or Cape
 Square Feet: 1736
 Bedrooms: 3
 Bathrooms: 2

Optional Features:

- 7/12 Roof
- 27'-4" Twin Peak Dormer with Full and Extended Eaves
- Box Bay 42
- Vertical Siding
- Shake Siding Accent
- Market Square Expressions Siding
- Clay Trim Package
- Upgraded Front Door

Features On-Site by Others:

- Garage
- Gutters & Downspouts

Ranch/Cape

2023



State Route 38
Emlenton, PA 16373
724-867-0189

www.manorwoodhomes.com



inHouse
experience



Connect with Us!

