

Elite

Blazer

The Blazer Elite: The High Value Home Series.

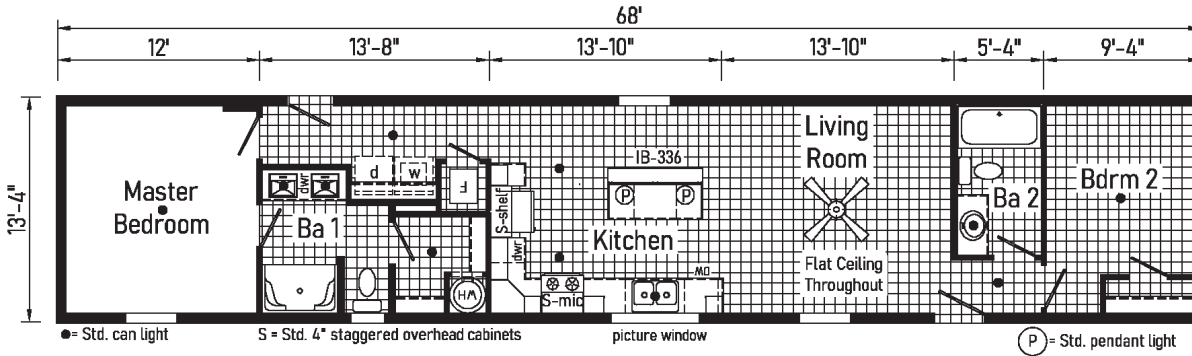
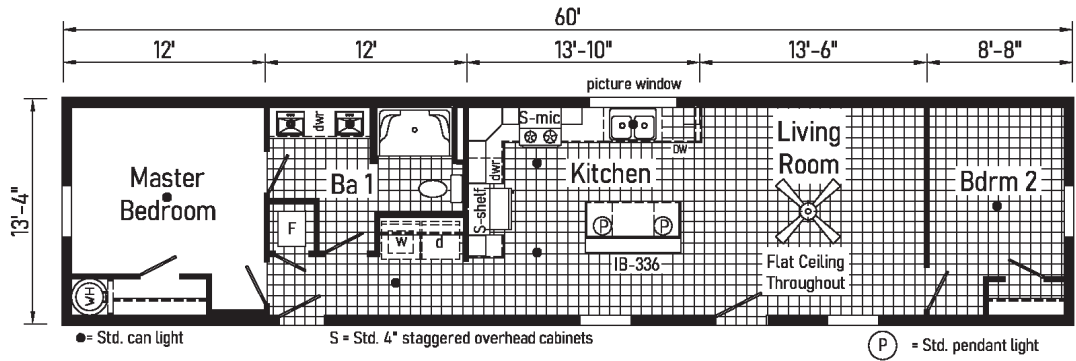
This limited offering includes open, family friendly floorplans, pre-selected beautiful home decors and our most popular features as standard.

These High Value Homes allow our home building process to be highly efficient. High efficiency means we can provide you more house for your money.



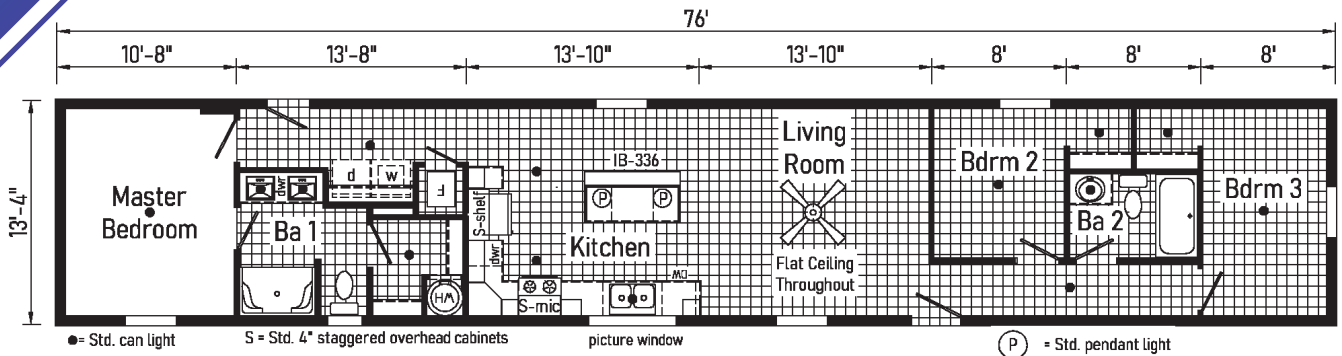
Commodore Homes
PENNSYLVANIA

TS1300P
800 Sq. Ft.
1460

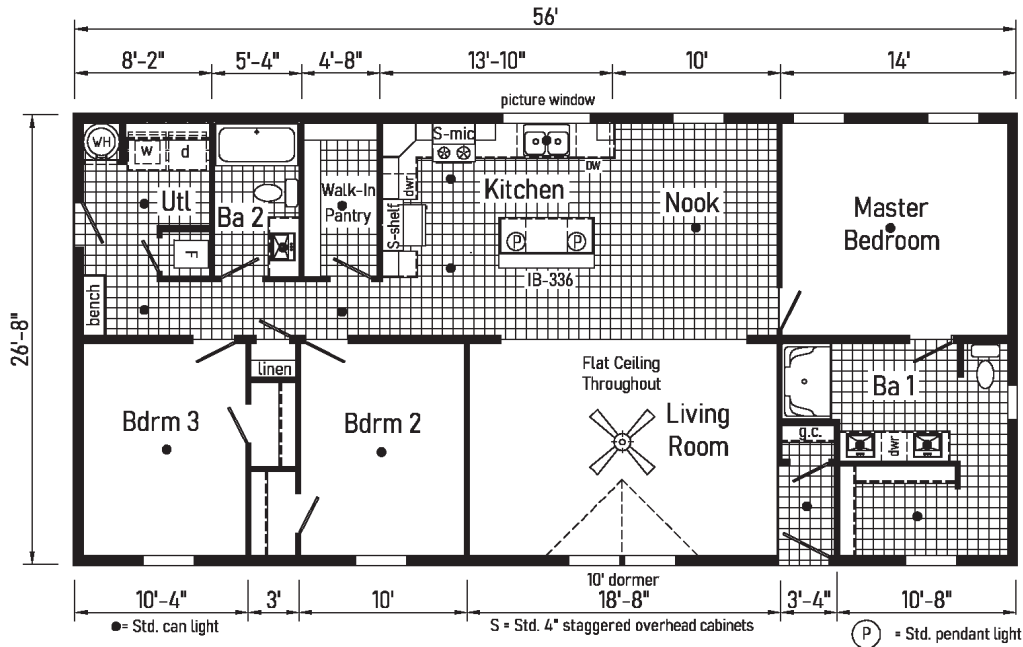


TS1301P
907 Sq. Ft.
1468

TS1302P
1013 Sq. Ft.
1476

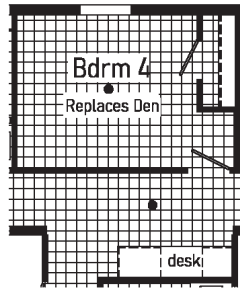


(2) ADJUSTABLE OUTRIGGERS • ADDITIONAL EXTERIOR WATER FAUCET • WATER SHUT OFF THROUGHOUT • MAIN WATER SHUT OFF IN HOUSE • STRUCTURE FLOW FAUCETS • 9-LITE REAR DOOR • 8' FLAT CEILING • LED CAN LIGHTS PER PRINT • CEILING FAN IN LIVING ROOM • (2) CYLINDRICAL STEM LIGHTS OVER ISLAND • STAINLESS STEEL 20 CF TOP FREEZER REFRIGERATOR • STAINLESS STEEL ELECTRIC RANGE • STAINLESS STEEL DISHWASHER -4 CYCLE • STAINLESS STEEL MICROWAVE OVER RANGE • KITCHEN ISLAND • ENTRY FOYER VINYL • 54" FIBERGLASS SHOWER IN MASTER BATH • ONE PIECE FIBERGLASS TUB/SHOWER IN BATH 2 • SQUARE CHINA SINKS • DOUBLE LAV SINKS IN MASTER BATH • WIRE SHELF OVER WASHER/DRYER

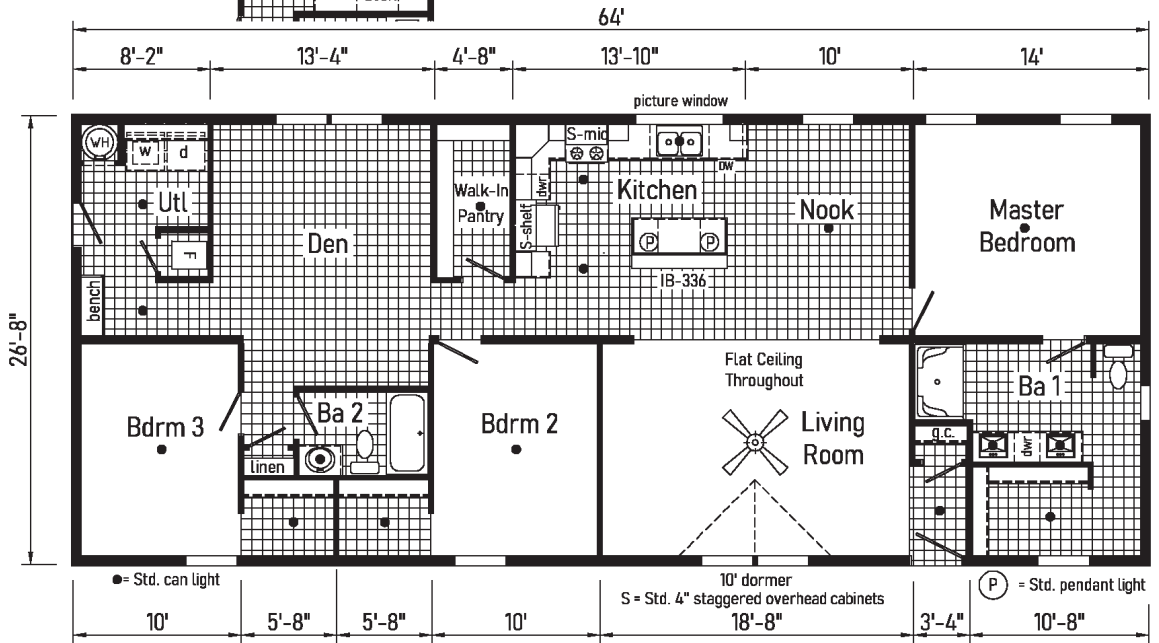


TD1302P
1493 Sq. Ft.
2856

TD1303P
1707 Sq. Ft.
2864



Optional
Bedroom 4 with
Desk at Hall





VALUE OPTIONS:

- 10' DORMER
- GAS PACKAGE
- STACK EXTENSION
- SLIDING GLASS DOOR
- OIL FURNACE
- 40 GALLON HOT WATER GAS OR ELECTRIC
- 2ND CONDUIT DROP
- NEW ENGLAND CODE
- 30# ROOF
- 40# ROOF
- TREATED SKIRT RAIL
- BACKING SUPPORTS
- WIND ZONE 2
- PHONE JACKS
- TV JACKS
- EXPANDED PANEL
- ICE SHIELD
- HARDWOOD CABINETS
- 25 OZ CARPET
- 8" DEEP SINK
- TRANSOM AT BATH 2

Your Independent Retailer is:

20898 Paint Blvd
 Shippenville, PA 16254
 (814) 226-9210

www.commodore-pa.com

PREFERRED DECOR SELECTIONS

Cool



Cabinets: White Oak
 Walls: White Ruff Stuff
 Counters: Brazilian Gray
 Vinyl Floor: LX275
 Carpet: Take Away Truffle

Warm



Cabinets: French Country Oak
 Walls: June Stone
 Counters: Spring Carnival
 Vinyl Floor: LX310
 Carpet: Take Away Summer Sand



Your purchase contract, including options, is with your retailer who is an independent contractor, not our agent, and who is responsible totally for any alterations, exchanges, additions or attachments made in or to your home.

All descriptive representations of the products on this brochure are believed to be correct at the time of publication. However, due to continued product improvement and changes in suppliers, design and production, accuracy cannot be guaranteed. Therefore, equipment, colors, material specifications, prices and model availability are subject to change without notice. All information and images contained in this brochure are property of Commodore Homes and for the use by active dealers of the company only. © AP M 9/22